



PocketMac, The Manual

<http://www.pocketmac.net>

Thank you for choosing PocketMac Pro Edition. We've worked very hard on this and we hope you'll be pleased.

If, for any reason, you have trouble getting the software installed and running as described here, please contact us for support at once. We're happy to help.

This document will help you get up and running with PocketMac Pro Edition as quickly as possible.

At this point, you should have received several files by email or download. Specifically, we will be interested in a file called **PMProX.hqx**.

If you haven't already downloaded this file, please do so now. If you downloaded this file, and you've already installed the software, congratulations!


If not, just double-click on the PMProX.hqx to unstuff the installer. You should have an application with an InstallerVise icon that says **PMPro**.


Run that PMPro application and let it walk you through the installation process. PMPro will install the PocketMac application, as well as some USB drivers so that your Mac can recognize the Pocket PC device when it's connected.

When you have fully completed the installation process (and **restarted your Mac**), please continue with the **instructions below...**

After the restart

The first thing to do once you've restarted your Mac is configure your system for PocketMac. To do this, **connect your Pocket PC** to your Macintosh (via USB hub, keyboard port, directly into the back of the Mac, etc.) and then launch the **System Preferences Network Settings Panel**.

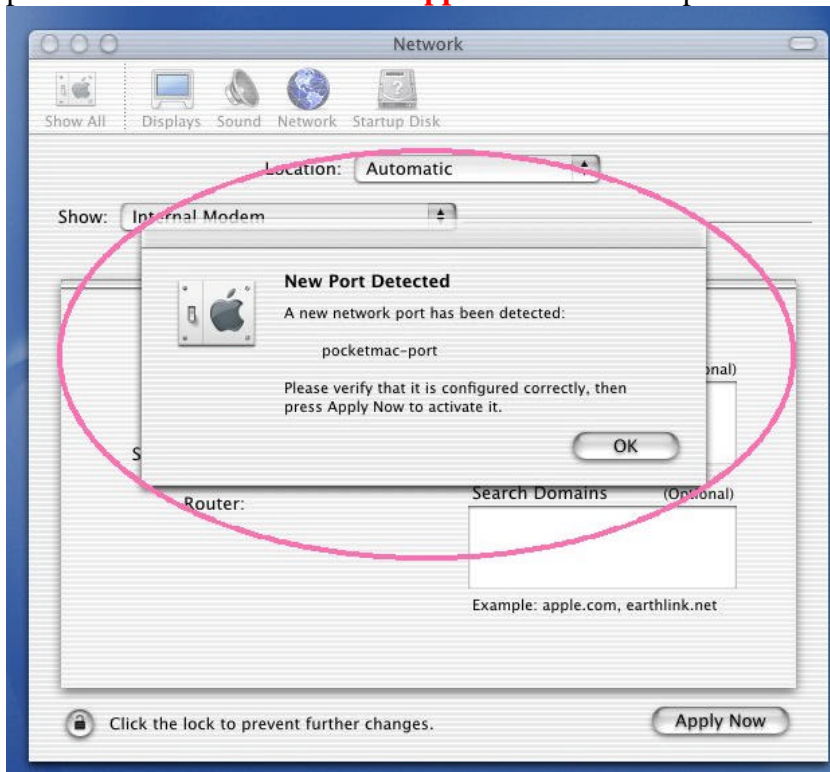
This means you'll be looking for an icon like this  on the Dock, and then another

that looks like this  once the System Preferences main screen is visible.

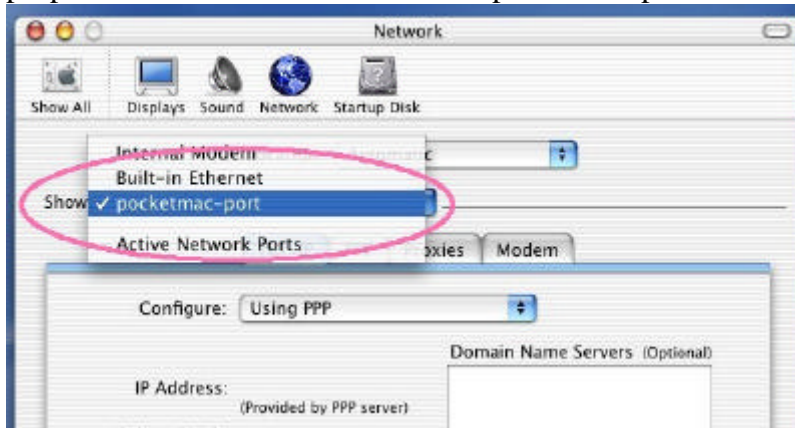
It should tell you that it has found a new port called "**pocketmac-port**".

This is a good sign. It means the installation went well, and things are right where they're supposed to be.

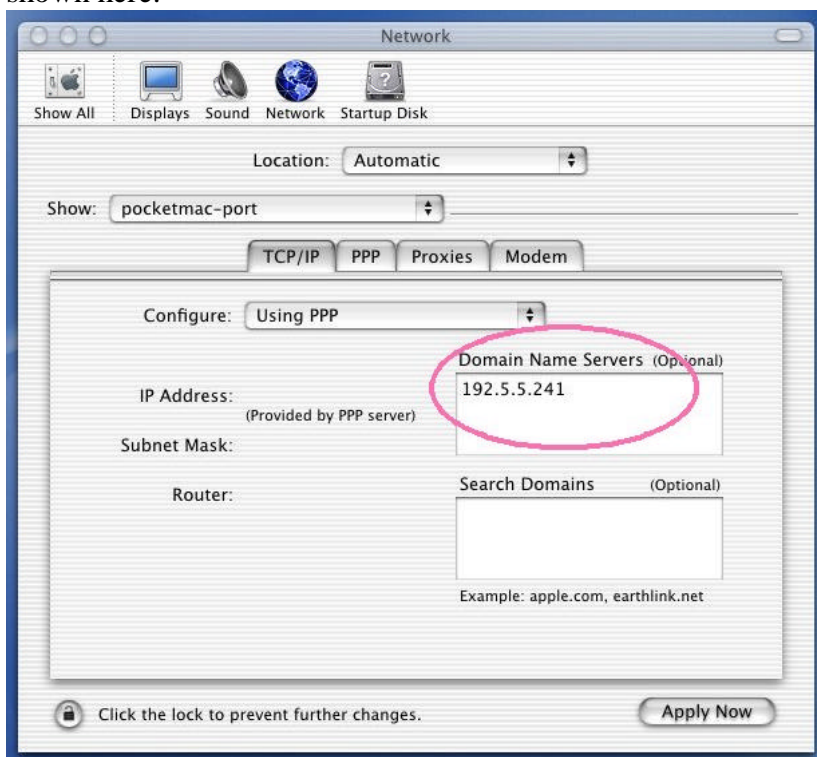
However, **if you don't see this message**, please make sure your **Pocket PC is connected** to your Mac and make sure you have **restarted your Mac at least once**. If this fails, please **contact us at once for support**. Do not attempt to re-install.



The next step is to **select the pocketmac-port** item, so that we can configure its properties. Please make sure to select pocketmac-port and not one of the other items.



Next, enter this value: **192.5.5.241** into the box labeled **Domain Name Servers**, as shown here:



When you're done, click **Apply Now** and then quit the System Preferences application.


You are now ready to run PocketMac Pro.

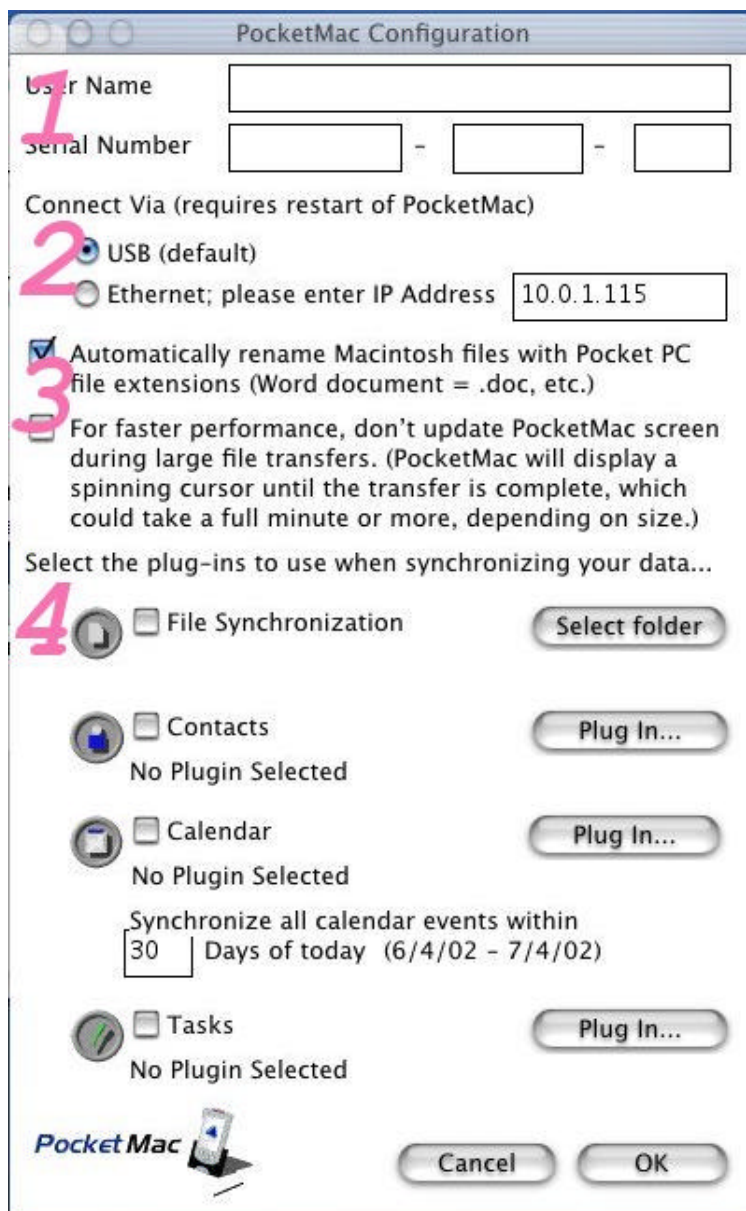
PocketMac Pro Preferences

For this step, we recommend that you **disconnect your Pocket PC**.


Using Finder, locate the **PocketMac Pro** folder in your **Applications** folder.



Start PocketMac Pro by double-clicking on an icon that looks like this . When PocketMac Pro starts, it will ask you to enter the registration information (which you should have received from us via email). PocketMac Pro will then display the **Configuration** screen. The Configuration screen can be divided into 4 main parts:



The screenshot shows the "PocketMac Configuration" dialog box with the following fields and options:

- 1** User Name: [Text Field]
- Serial Number: [Text Field] - [Text Field] - [Text Field]
- Connect Via (requires restart of PocketMac):
 - 2** USB (default)
 - Ethernet; please enter IP Address: [Text Field] (10.0.1.115)
- 3** Automatically rename Macintosh files with Pocket PC file extensions (Word document = .doc, etc.)
- For faster performance, don't update PocketMac screen during large file transfers. (PocketMac will display a spinning cursor until the transfer is complete, which could take a full minute or more, depending on size.)
- Select the plug-ins to use when synchronizing your data...:
 - 4** File Synchronization [Select folder]
 - Contacts [Plug In...]
 - Calendar [Plug In...]
 - Synchronize all calendar events within [30] Days of today (6/4/02 - 7/4/02)
 - Tasks [Plug In...]
- Buttons: Cancel, OK
- Logo: Pocket Mac 

Each section of the Configuration screen has a separate purpose. For example, the first section, which looks like this

User Name

Serial Number - -

helps PocketMac Pro to know who you are. The **User Name** and **Serial Number** should have been sent to you as part of the email with the download instructions. If, for some reason, they don't appear to be part of that note, please let us know so we can resend this information to you at once. Please type them into the Configuration screen if you have not yet already done so.

The next section, which looks like this

Connect Via (requires restart of PocketMac)

USB (default)

Ethernet; please enter IP Address

tells PocketMac how you're going to connect your Pocket PC to your Mac. **If you're not sure, choose the USB option.**

The next section tells PocketMac Pro about how you want data to be exchanged between the Mac and the Pocket PC. It looks like this:

- Automatically rename Macintosh files with Pocket PC file extensions (Word document = .doc, etc.)
- For faster performance, don't update PocketMac screen during large file transfers. (PocketMac will display a spinning cursor until the transfer is complete, which could take a full minute or more, depending on size.)





By default, the first option is checked for you. When checked, it means that PocketMac will attempt to rename a file as you copy it from your Mac to your Pocket PC, so that the Pocket PC can determine what type of file it is.¹

¹ Most OS X software automatically appends the corresponding Windows extension to the names of files. Therefore, you may find this option unnecessary.

The second option in this section, when enabled, will allow PocketMac to copy large files much faster. However, the tradeoff is that it will not update any of the status information or other PocketMac screens while it is copying the file. So, for small files, this will make no difference. But, for larger files, all you will see is a spinning cursor over the PocketMac screens while the file is copied.²

The fourth and final section of the Configuration screen, shown here,

Select the plug-ins to use when synchronizing your data...

	<input type="checkbox"/> File Synchronization	Select folder
	<input type="checkbox"/> Contacts No Plugin Selected	Plug In...
	<input type="checkbox"/> Calendar No Plugin Selected	Plug In...
	Synchronize all calendar events within <input type="text" value="30"/> Days of today (6/4/02 - 7/4/02)	
	<input type="checkbox"/> Tasks No Plugin Selected	Plug In...

is what you've probably been waiting for. This is where you can tell PocketMac what data to sync, and with what other software it should sync this data.

To sync any of these types of data, check the box next to the type of data you want to sync, and then click on the corresponding button to the right. That is, if you want to **sync Contacts**, check the box next to "Contacts" and then **click the Plug In** button.

Select the appropriate plug-in for the type of data you'd like to sync. If you want to sync to Entourage, select the Entourage Contacts Plug-in. Similarly, if you wanted to **sync Calendars**, check the box next to "Calendars" and then **click the Plug In** button to select the Entourage Calendar Plug-in.

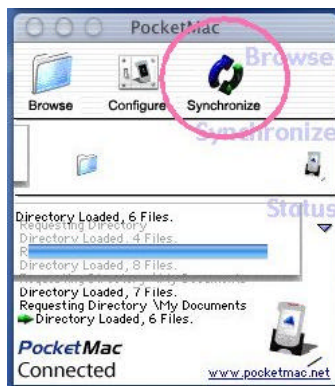
² Please note, though, that the benefit is significant. In our tests with a typical MP3 file, the time to copy the file went from approximately 3 minutes to 1 minute, 9 seconds -- a dramatically faster time.

When you're done and you've selected the plug-ins/data to sync, please click the OK button and connect your Pocket PC to your Mac.

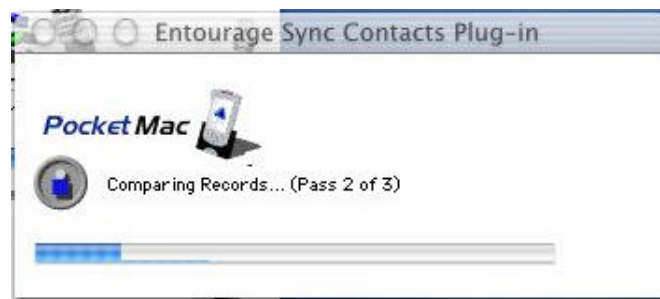
Synchronizing with PocketMac Pro

After a few moments of displaying status messages, the PocketMac software will indicate that it has successfully connected to your Pocket PC by playing a chime and displaying an animation that shows the Pocket PC icon at the bottom flying into its cradle. The word **Connected** will also appear at the bottom left corner of the main PocketMac screen.

When this has happened, you can begin synchronizing data by clicking the **Synchronize** button, highlighted in this image here:



At this point, PocketMac will launch the appropriate plug-in(s) and begin synchronizing your data. The plug-in(s) will look something like this:



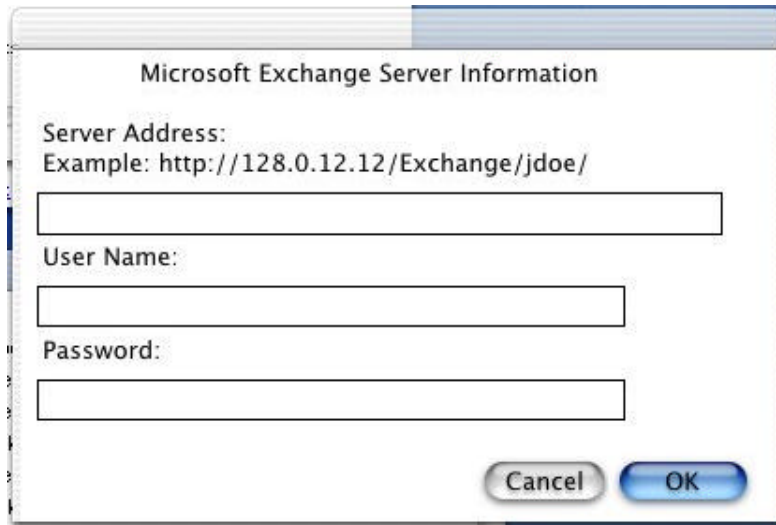
While the sync is usually a fairly prompt process, it can take some time if there are great numbers of contacts, calendar entries, etc.

Entourage Synchronization with PocketMac Pro

Please note that Entourage must be running on the Mac at the time you click the synchronize button. Please also note that Entourage on OS 9 does not allow us to access recurring appointments.

Exchange Server 2000 Synchronization with PocketMac Pro

When PocketMac launches the Exchange Server 2000 plug-ins for the first time, it will prompt you for the **location of the Exchange Server** on your network, as well as your **username** and **password**³ for the Exchange Server, as shown below:



Microsoft Exchange Server Information

Server Address:
Example: http://128.0.12.12/Exchange/jdoe/

User Name:

Password:

Cancel OK

If you are uncertain about any of these items, please consult with your network administrator.

Also, please note that your Exchange Server must be an Exchange 2000 server, running Outlook Web Access (OWA) with plain-text authentication. Here again, if you are uncertain about any of these items, please consult with your network administrator.

If at any time, you need to re-enter this information, simply locate the **ExchangeSettings.dat** file in the PocketMac Pro **Plugin Folder** and delete it.

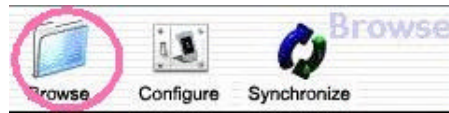
Browsing files on your Pocket PC with PocketMac Pro

We have sought to provide a familiar, friendly Finder-like look and feel for the Pocket PC's storage when using PocketMac.

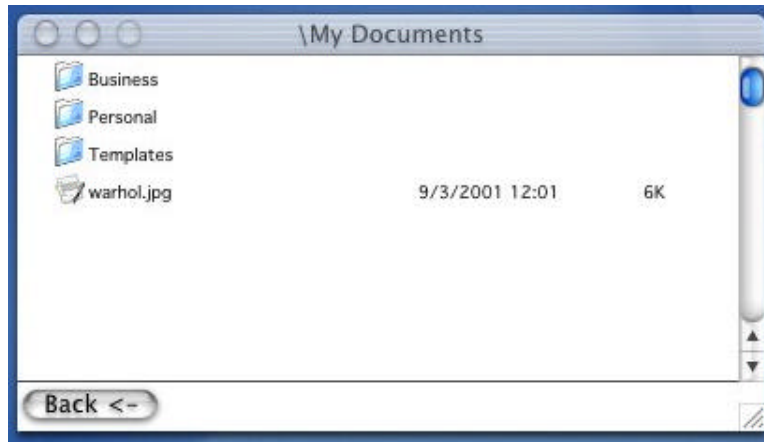
With PocketMac Pro, we've adjusted some of the icons and the overall appearance of the Browse Window to make it even friendlier.

³ Although the password is visible when entered, it is stored in an encrypted form. It is simply visible once in the login screen to facilitate data entry.

To view the files and folders of your Pocket PC, simply click the large blue folder icon on the left of the main PocketMac screen when connected to the Pocket PC:



You will then see a new window appear which looks something like this:



In other words, PocketMac is set up so that its Browse window works entirely off drag & drop with the Macintosh desktop. For example, to delete a file from the Pocket PC, simply drag it to the Trash on the Mac desktop. Similarly, to copy a file to the Pocket PC, simply drag it onto the Browse window of PocketMac.

Conclusion

Thank you for choosing PocketMac. You are now able to combine the finest desktop systems with today's finest portable devices.

Enjoy!