

NINO

500

Owner's Guide

©1999 Philips Electronics North America Corporation. All rights reserved.

Information in this document is subject to change without notice. No part of this document may be reproduced or transmitted in any form or by any means, electronic or mechanical, for any purpose, without the express written permission of Philips Mobile Computing Group, a division of Philips Electronics North America ("Philips").

Philips or its affiliated companies, may have patents, patent applications, trademarks, copyrights, or other intellectual property rights covering the subject matter in this document. Except as expressly provided in any written license agreement from Philips, the furnishing of this document does not give you any license to patents, trademarks, copyrights, or other intellectual property of Philips or its affiliated companies.

Nino, Velo, and the Nino and Velo logos are either registered trademarks or trademarks of Philips in the United States and/or other countries.

Microsoft, MS, ActiveSync, Active Desktop, Outlook, Windows, Windows NT, and the Windows logo are registered trademarks or trademarks of Microsoft Corporation in the USA and/or other countries. Microsoft products are licensed to OEMs by Microsoft Licensing, Inc., a wholly owned subsidiary of Microsoft Corporation.

CIC and Jor are registered trademarks or trademarks of Communication Intelligence Corporation.

Other products and company names mentioned herein may be the trademarks of their respective owners.

4335 323 10012

END USER LICENSE AGREEMENT (For U.S. customers only)

IMPORTANT - CAREFULLY READ THE FOLLOWING TERMS AND CONDITIONS OF THIS AGREEMENT.

This End User License Agreement ("Agreement") is a legal agreement between you, the user of Philips' portable computing device ("Product"), and Philips Mobile Computing Group ("Philips"), the manufacturer of the Product. The Product comes with certain software, and associated documentation, which are installed on the Product and/or included in the original Product packaging on external media. (All such software and documentation, but specifically excluding Microsoft software and documentation, are collectively referred to as "Software".) YOU DO NOT NEED TO SIGN THIS AGREEMENT IN ORDER FOR IT TO TAKE EFFECT. BY INSTALLING, COPYING, OR OTHERWISE USING THE SOFTWARE, YOU ARE AGREEING TO BE BOUND BY THE TERMS OF THIS AGREEMENT. IF YOU DO NOT AGREE TO THE TERMS OF THIS AGREEMENT, PHILIPS IS UNWILLING TO LICENSE THE USE OF THE SOFTWARE TO YOU. IN SUCH EVENT, YOU MUST NOT OPEN THE SEALED PRODUCT OR SOFTWARE, AND MUST PROMPTLY RETURN THE SEALED PRODUCT AND SOFTWARE TO THE PLACE YOU OBTAINED IT FOR A FULL REFUND.

1. **Grant of License.** Philips hereby grants you the non-exclusive right to use the Software only as installed on the Product or, for Software which is not already installed on the Product, to install and use the Software on a single Product.
2. **Ownership of the Software and Documentation.** You do not receive title or ownership to the Software, but merely the limited right to use the Software as specified in this Agreement.
3. **Restrictions.** You may not: (i) copy the Software except for one copy for back-up archival purposes provided that the copy contains all of the original Software's proprietary notices and is subject to all of the terms of this Agreement; (ii) modify, translate, reverse engineer, decompile, disassemble (except to the extent that this restriction is expressly prohibited by law) the Software, or create derivative works based upon the Software; (iii) rent, lease, lend, or sublicense the Software; (iv) or transfer the Software except together with the sale or transfer of the Product and then only if you keep no copy of the Software, if you transfer all of the Software (including back-up copies), and if the recipient agrees to comply with, and be bound by, the terms of this Agreement.
4. **Termination.** This Agreement, and the licenses granted in it, is effective until terminated. This Agreement will terminate: (i) automatically if you fail to comply with any of the terms of this Agreement; or (ii) without prejudice to any other rights, upon written notice sent to you by Philips, if Philips, in its sole judgment, believes that the Software is being used for a purpose not approved by it or that its rights are being jeopardized. In such event, you must destroy all copies of the Software and all of its component parts immediately upon receipt of such notice.
5. **Microsoft Software.** This Agreement does not apply to Microsoft software. Your rights to use, and restrictions on, Microsoft software are governed by a separate end user license agreement, included with the Product, which applies exclusively to Microsoft software.
6. **U.S. Government.** Restricted Rights. Pursuant to DFARS 227.7202 and FAR 12.212, the Software is subject to, and restricted by, this Agreement. Use, duplication, or disclosure by the United States Government is governed solely by the terms and conditions contained herein.
7. **Choice of Law.** This Agreement is governed and construed under the laws of the State of California, except those portions pertaining to conflicts of law. You consent to the exclusive jurisdiction of the state and federal courts sitting in the State of California.
8. **Entire Agreement.** This Agreement constitutes the final, exclusive and complete agreement with you concerning the Software. It may not be amended or altered except in a written document signed by you and an authorized representative of Philips.

I Welcome to the Nino™ / I

A tour of the Nino / 2

2 First Steps with the Nino / 5

Installing the batteries and plugging in the Nino with the Nino AC Adapter / 5

Turning on the Nino / 7

Some useful settings / 11

3 Connecting and Synchronizing / 13

Overview of Microsoft Windows CE Services / 13

Connecting your Nino to your PC / 14

Installing Microsoft Windows CE Services on your Windows 95/98 primary PC and synchronizing for the first time / 15

More about synchronization / 18

Backing up your data / 19

Working with channels / 19

Getting help on Microsoft Windows CE Services / 20

4 Nino Basics / 21

Using the hardware buttons / 21

Using the microphone / 23

Using the headphone jack / 23

Adjusting the volume / 23

Keeping your data safe / 23

Using the Active Desktop / 24

Using the Start menu and taskbar / 24

Using the command bar / 25

Typing and writing on your Nino / 25

Viewing information / 28

Using a modem / 29

Customizing your Nino / 29

Finding information / 31

5 First Steps with Windows CE Software / 33

Microsoft Windows CE software / 33

Starting and exiting an application / 34

Using infrared communication / 34

Capturing ideas and thoughts with Voice Recorder / 35

Creating notes and drawings with Note Taker / 39

Using Microsoft Pocket Outlook / 44

6 Adding a CompactFlash Card / 55

7 Taking Care of Your Nino / 57

General handling / 57

Screen care / 57

Battery management / 57

Cleaning and maintenance / 58

Erasing all your data and settings / 58

Avoiding electrostatic discharge / 58

And finally... / 58

8 Troubleshooting / 59

General troubleshooting / 59

Connecting your Nino to your primary PC / 61

Other issues / 67

A Technical Support, Service, and Repair / 69

Support options / 69

Returning your Nino for repair or exchange / 70

B Additional Windows NT Instructions / 71

*Installing Microsoft Windows CE Services on a Windows NT primary PC
and synchronizing for the first time / 71*

About infrared communication / 73

C Nino 500 Specifications / 75

D Regulatory Information / 77

Declaration of conformity / 77

FCC warning statement / 77

Industry Canada Statement / 78

VCCI Class 2 Statement / 78

E Battery Warnings / 79

F Microsoft Windows CE CD Software / 81

Index / 83

Welcome to the Nino™

—the premier color Palm-size PC that keeps you up-to-date when you're on-the-go.



With its unique ergonomic design, color screen, and automatic synchronization with your primary Microsoft® Windows®-based PC, your Nino lets you easily and quickly find or modify your essential personal information—including your calendar, tasks, contacts, e-mail, Internet Information Services (channels), and much more.

Utilizing the Microsoft® Windows® CE operating system for the Palm-size PC, the Nino also provides bonus software, including Microsoft Note Taker, Voice Recorder, and more.

This guide will help you get started.

For more detailed information, you can turn to a variety of resources:

- **Online help**—On the **Start** menu, tap **Help** to get information about specific features of Nino software.
- **The Philips Nino CD**—Go to this CD for documentation about the extra software bundled with your Nino, as well as other useful information.
- **The Nino Web site** at <http://nino.philips.com>—Visit this site for the latest Nino news, tips, accessories, and support information.
- **The Microsoft Windows CE Web site** at <http://www.microsoft.com/windowsce/default.asp>—Visit this site for the most recent information about Windows CE.

A tour of the Nino

Nino front and right side

On/Off button

Press this button to turn the Nino on or off.

Indicator lights

The top light goes on when an alarm you've set is activated. The bottom light blinks green when the batteries are recharging.

Dock/serial connector

Connects the Nino to the Nino Dock.

Telecom Port

Connect the U.S. Modem Click-on or the European modem cable here.

AC adapter port

Plug in the Nino AC Adapter here.

Quick Start buttons

Press one of these customizable buttons to turn the Nino on and start a particular program, or to switch instantly between programs.

Nino left side

Scroll up control

Press here to scroll up in a list.

Action button

Functions like the Enter key on your PC.

Scroll down control

Press here to scroll down in a list.

Exit button

Functions like the Escape key on your PC.

Speaker

Microphone

Nino back

CompactFlash card compartment

Install a CompactFlash card here.

Headphone jack (at top of unit)

Stylus slot

Holds your Nino stylus.

Infrared port (at top of unit)

Send or receive information wirelessly via this port.

Soft reset button

Press this recessed button to reset the Nino without losing saved information.

ROM compartment

Battery compartment

Install the rechargeable battery pack or AA batteries here.

Non-removable backup battery

Maintains the integrity of your data.

DC Input jack symbol

Other Nino components

Nino Dock

Place the Nino in the Nino Dock to synchronize information with your primary PC and to recharge the batteries.

Stylus

Use only the Nino stylus to write or tap on the screen.

First Steps with the Nino

This chapter contains the information you need to start using your Nino. It includes the following topics:

- Installing the batteries and plugging in the Nino with the Nino AC Adapter
- Turning on the Nino
- Some useful settings

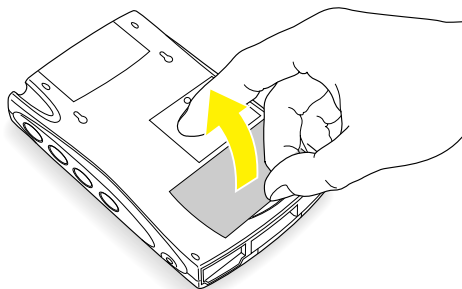
Installing the batteries and plugging in the Nino with the Nino AC Adapter

You can provide power to the Nino in three ways: 1) the Nino AC Adapter, 2) the Nino Rechargeable Battery Pack, or 3) two AA batteries. If connecting to AC power is not convenient and you would like to try out your Nino immediately, you can install AA batteries. (Be careful to correctly align the positive and negative ends.) Philips recommends that you first install the rechargeable battery pack and leave your Nino plugged in overnight.

CAUTION *Be aware that data you enter may not be properly maintained until the built-in backup battery is adequately charged.*

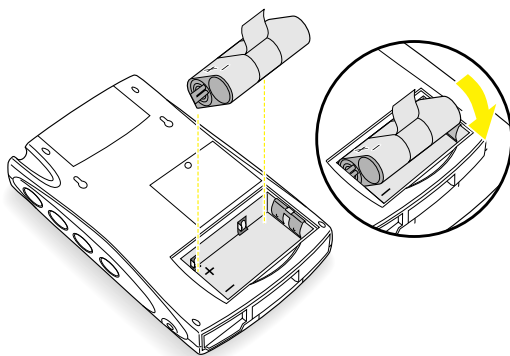
To install the batteries and plug in the Nino:

- 1 Open the door of the battery compartment.

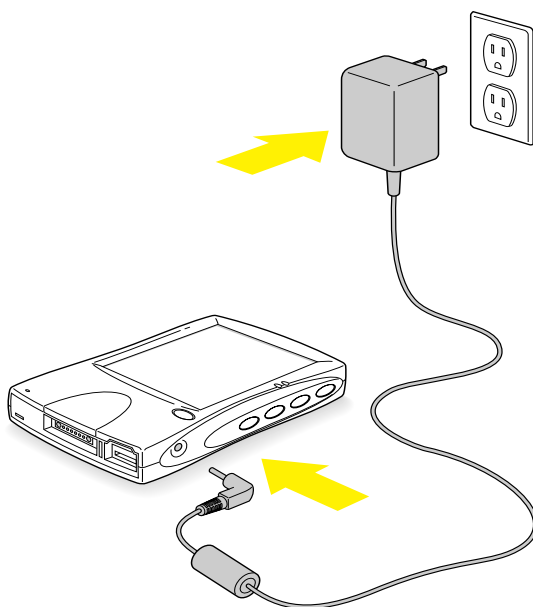


- 2 Align the battery pack with the battery compartment, as shown in the next figure.

- 3** Place the back edge of the rechargeable battery pack against the far wall of the battery compartment.
- 4** Gently roll the front end of the battery pack down into the battery compartment, as shown below.



- 5** Close the battery compartment door.
- 6** Plug in the Nino with the Nino AC Adapter.
Only use the AC adapter provided with the Nino.



The green indicator light blinks while the rechargeable battery pack is charging. Leave the Nino plugged in for several hours (overnight is best). The indicator light goes off when the rechargeable battery pack is fully charged.

Turning on the Nino

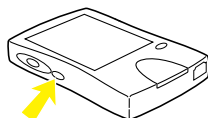
- 1 Press the **On/Off** button once.

The Nino Welcome screen appears. In a moment, it is replaced by the Windows CE Welcome screen.

NOTE You may get a message indicating that the built-in backup battery is low. Be aware that it may take a few days of normal usage before the backup battery is fully recharged. (It recharges when you are plugged in to AC power, or when you are running the Nino using the rechargeable battery pack or AA batteries.)

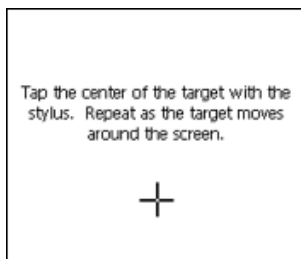
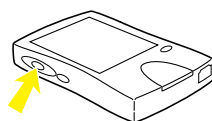


- 2 You may want to adjust screen contrast. Hold down the **Exit** button, and use the **Scroll up** or **Scroll down** control.



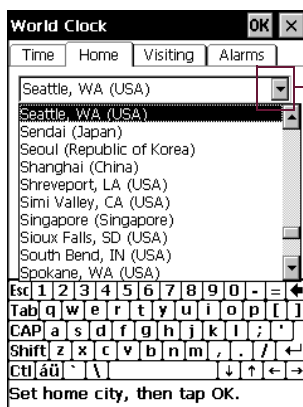
3 Press the **Action** button.

Nino now asks you to calibrate the unit by tapping a sequence of screen locations. Tap gently but firmly. When you have completed a series of taps, you'll be asked to press the **Action** button again.



4 Set your home location.

Tap the location arrow to see a list of cities. Choose your location (or one nearby, for the moment). Then tap **OK**.



Location arrow

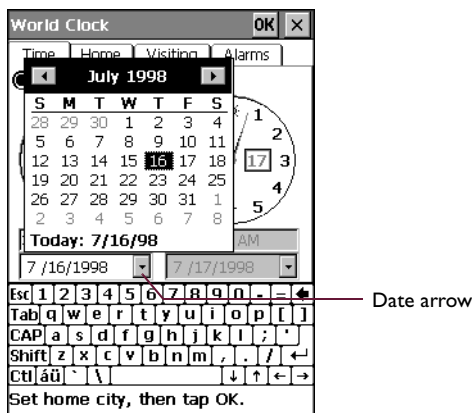
- 5** Then set the time, using the on-screen keyboard.

To get a colon (:), tap the **Shift** key.



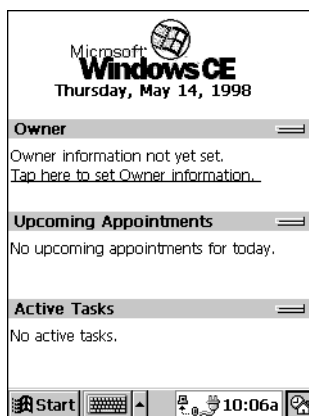
- 6** Then set the date.

Tap the date arrow to display a calendar. Navigate to the correct month and tap on the correct day. Then tap **OK**.



A message tells you, "Setup is complete."

7 Tap once to go to the Active Desktop.



Any time you want to display the Active Desktop, tap here.

The Active Desktop can display important information such as your appointments and tasks for the day. Notice that your owner information is not yet available. It's a good idea to provide it now.

8 Tap **Tap here to set Owner information**.

Use the on-screen keyboard to fill in your personal information. Scroll down to see all the fields available. When you're finished, tap **OK**.



You can make the keyboard disappear and reappear by tapping here.

Your personal information now appears on the Active Desktop.

Some useful settings

To check the state of the built-in backup battery—Tap **Start**, **Settings**, and then **Power**.

To modify the contents of the Active Desktop—Tap **Start**, **Settings**, **Display**, and then the **Desktop** tab.

To customize the Start menu—Tap **Start**, **Settings**, **Taskbar**, and then the **Start Menu Items** tab.

To set one or more alarms—Tap **Start**, **Settings**, **World Clock**, and then the **Alarms** tab.

To set time, date, and number formats for your country—Tap **Start**, **Settings**, and then **Regional Settings**.

To adjust backlighting—Tap **Start**, **Settings**, **Backlight and Contrast**, and then the **Backlight** tab.

To adjust the contrast level on your screen—Press and hold the **Exit** button, and then use the **Scroll up** and/or **Scroll down** control. Alternately, tap **Start**, **Settings**, **Backlight and Contrast**, and then the **Contrast** tab.

Connecting and Synchronizing

This chapter contains the information you need to create a partnership between your Nino and PC using Microsoft Windows CE Services. It includes the following topics:

- Overview of Microsoft Windows CE Services
- Connecting your Nino to your PC
- Installing Microsoft Windows CE Services

WINDOWS NT ONLY To install Microsoft Windows CE Services on a Windows NT Workstation, use the procedure found in Appendix B, “Additional Windows NT Instructions.”

- More about synchronization
- Working with channels
- Getting help on Microsoft Windows CE Services

Overview of Microsoft Windows CE Services

Microsoft Windows CE Services with ActiveSync™ allows you to synchronize the information on your primary PC with the information on your Nino. Synchronization is the process of comparing the data on your Nino with your primary PC and updating both computers with the most recent information. For example:

- Keep Pocket Outlook data up-to-date by synchronizing your Nino with your choice of Microsoft Outlook (Inbox synchronization with Outlook Express is not currently supported), Microsoft Schedule+, or Microsoft Exchange on your primary PC.
- Synchronize Voice Recorder and Note Taker documents between your Nino and primary PC.

With Microsoft Windows CE Services, you can also:

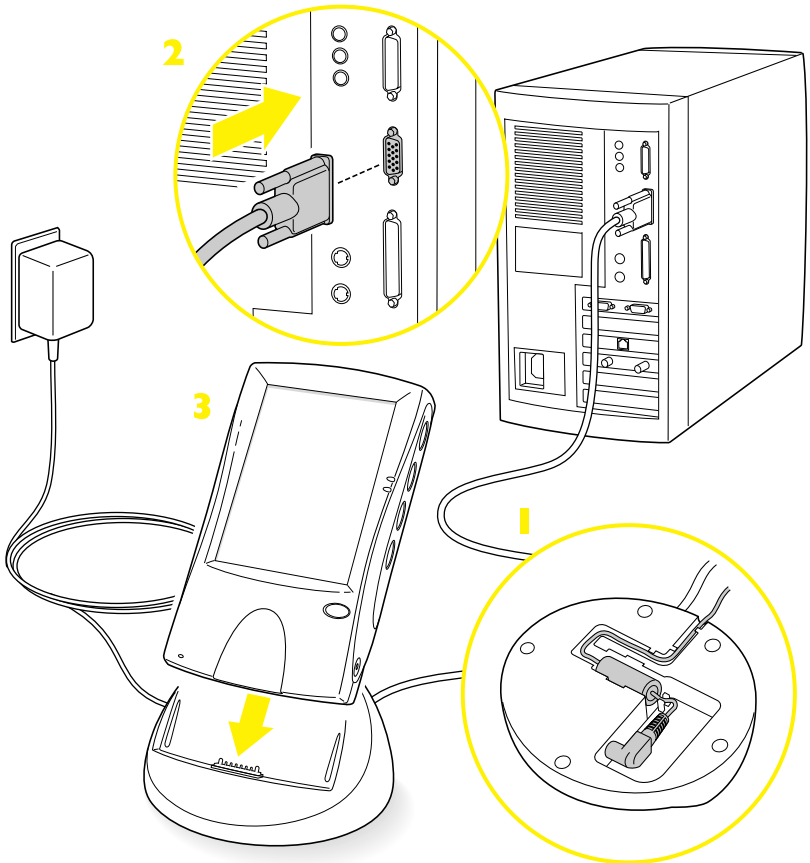
- Back up and restore your Nino data.
- Add and remove programs on your Nino.
- Copy (rather than synchronize) files between your Nino and your primary PC, and browse your Nino from your primary PC.

Connecting your Nino to your PC

Before you synchronize your primary PC with your Nino, you have to physically connect the two computers.

To connect your Nino to your PC:

- 1** Place the Nino in the Nino Dock.
- 2** Connect the AC adapter to the dock, and plug it in, as shown in the next figure.
- 3** Connect the dock serial cable to an available serial port on your PC.
- 4** Make sure the Nino is on.



Installing Microsoft Windows CE Services on your Windows 95/98 primary PC and synchronizing for the first time

WINDOWS NT ONLY You must consult your system administrator to install Microsoft Windows CE Services on a primary PC that runs Windows NT Workstation. You must have “administrator” privileges. The following procedure is for Windows 95/98 users only. If you are using a primary PC that runs Windows NT Workstation, use the procedure found in Appendix B, “Additional Windows NT Instructions.”

To prepare your PC for a “partnership” with your Nino, you need to install Microsoft Windows CE Services from the *Microsoft Windows CE Services CD*.

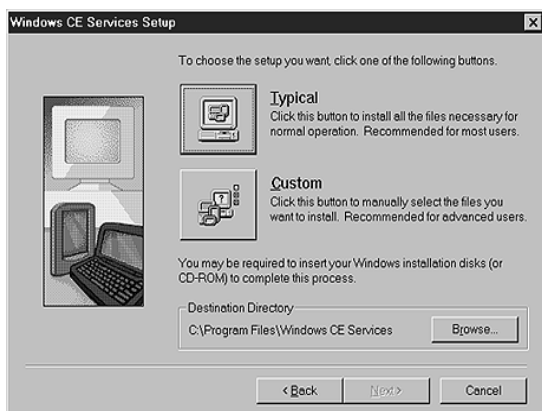
Before you start, save the work on your PC and quit all programs. If this is the first time you are installing Microsoft Windows CE Services on your PC, you may also need to use your Windows CD during the process.

You may also need to change the communication speed (baud rate) of your Nino to match the communication speed of your primary PC. To change the communication speed of your Nino, tap **Start, Settings, Communications**, and then the **PC Connection** tab. Make sure the **Enable direct connections to the desktop computer** checkbox is checked. By default, the communication speed is 19200 Kbps, and the tab says “Serial @19200.” To change the communication speed, tap **Change Connection**. On the Change Connection screen that appears, select the communication speed from the **Connect to desktop computer using** list that matches the communication speed of your primary PC. For more information, see “How do I check and, if necessary, change the communication speeds (baud rates) on my Nino and primary PC so that they are the same?” in Chapter 8, “Troubleshooting.”

To install Microsoft Windows CE Services and synchronize:

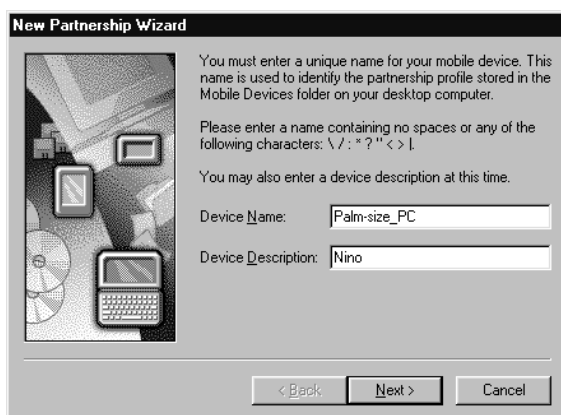
- 1 Insert the *Microsoft Windows CE Services CD* in your CD-ROM drive.

The Microsoft Windows CE Services Setup screen may appear automatically. If the Microsoft Windows CE Services Welcome screen appears, click the Install Microsoft Windows CE Services icon. If neither screen appears, select **Run** from the **Start** menu, type *d:setup*, where *d* is the name of the drive with the *Microsoft Windows CE Services CD*, and press **Enter**. Follow the on-screen directions. The Installation Wizard presents welcome and licensing information, and then asks you to fill in your name and company, and choose a setup.



- 2 Click the **Typical** option and follow the on-screen instructions. When you have installed the software, the **Get Connected** dialog box appears.
- 3 Make sure the Nino is turned on and firmly placed in the Nino Dock. Then, on the **Get Connected** dialog box, click **Start**. It takes a few moments for the software to locate your Nino and to configure communication settings. When the process is finished, the Mobile Devices window appears on your PC screen.

- 4 Wait a few moments until the New Partnership Wizard appears.



If Microsoft Windows CE Services fails to detect your Nino, see online Help on your primary PC by choosing **Windows CE Services Help Topics** on the **Help** menu in the Mobile Devices folder, or refer to Chapter 8, “Troubleshooting.”

- 5 Use the New Partnership Wizard to establish the Nino-to-PC partnership.

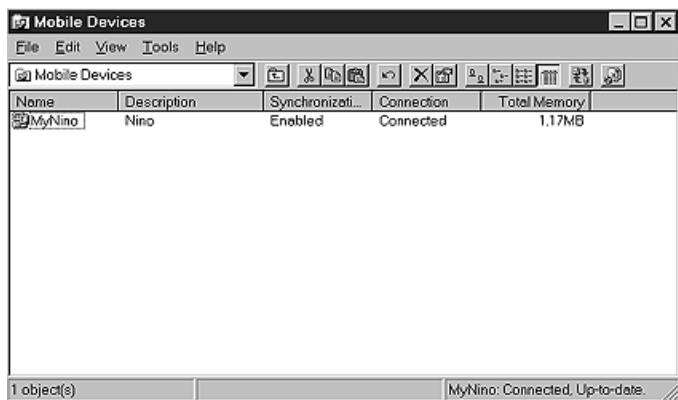
Fill in the device name and description (“Nino”). Leave the **On Connect** option checked for synchronization. This will synchronize your Nino each time it is connected.

- 6 A few moments after the partnership is established, ActiveSync on your PC automatically starts the initial synchronization process.

Information from primary PC applications such as Microsoft Outlook is transferred to your Nino.

During this process you may see a screen asking you to “Combine” or “Discard” information on the PC and the Nino. Choose **Combine**.

When initial synchronization is successfully completed, your primary PC desktop displays the Mobile Devices window with the message “Connected, Up-to-date” in the lower right corner.



During installation, Microsoft Windows CE Services places a Mobile Devices shortcut on your desktop. (Mobile Devices also shows up as an entry in My Computer.)

NOTE To disconnect the Nino from the PC, take it out of the Nino Dock.

More about synchronization

You can synchronize your Nino and your primary PC to make sure that both devices have the most up-to-date information.

Synchronization starts automatically when you put the Nino in the Nino Dock (if you left the **Automatically synchronize upon connecting** option checked when you established the Nino-PC partnership). Exactly what gets synchronized depends on the settings you choose from **ActiveSync Options** on the **Tools** menu in the Mobile Devices window.

You can synchronize the following items:

- Contacts, Calendar, and Tasks

Information stored in these programs on your Nino is synchronized with Schedule+ or Outlook on your primary PC. The most recently modified information, wherever it resides, replaces the older information.

- **Inbox Messages**

Messages in Exchange or Outlook on your primary PC are copied to your Nino. Messages you created on your Nino are stored in your Outbox and transferred to your primary PC for transmission.

- **Files**

Files in NoteTaker and Voice Recorder on your Nino are synchronized with files in the My Documents folder (Windows 95), or your Personal folder (Windows NT) on your PC.

- **Channel Information**

The most recent information for the channels you subscribe to on your PC is downloaded to your Nino.

Backing up your data

Regularly back up your Nino data on your primary PC using Microsoft Windows CE Services, in case information on your Nino is ever corrupted or lost. Connect your Nino to your primary PC, and then click **Backup/Restore** on the **Tools** menu in the Mobile Devices folder on your primary PC. Your first backup may take some time, depending on how much information you have on your Nino. Subsequent backups will be faster if you select **Incremental**.

Working with channels

A channel is a Web site or other Web-formatted content that is available for offline viewing on your Nino. Channels allow your primary PC to download Internet, intranet, or other Web-formatted content to your Nino via synchronization.

Channel content can be updated on a regular basis, such as updates from a news channel, or on a one-time basis, such as movie listings from an entertainment channel.

Internet Explorer (version 4.0 or higher) on your primary PC manages channels and automatic updates. Use it on your primary PC to subscribe to Mobile Channels.

For information on getting started with channels on your Nino, visit <http://www.microsoft.com/windowsce/channels/default.asp>.

Personalizing channels

Some channels are divided into content areas. You can choose which content areas you want to download to your Nino. In Channels, tap **File**, then **Channels**, and select the channels and content areas you want.

You can specify the amount of channel information that is transferred to your Nino. In Channels, tap **View**, then **Options**.

Your Nino stores Channel information, and replaces older content with newer content. To remove a channel and all of its content, in Channels, tap **File**, then **Channels**, and uncheck the channel that you want to remove.

Synchronizing channel information

You can synchronize channel information as part of the general synchronization process described earlier in this chapter. In the Mobile Devices window of Microsoft Windows CE Services, click **Tools, ActiveSync Options**, and then select **Channel Item**. During synchronization, Microsoft Windows CE Services copies channel information to your Nino.

Viewing channel content

Whenever new content is available for one of your channels, the Channel icon appears in the status area of the taskbar. Double-tap the icon to switch to Channels, or tap **Start**, then **Channels**.

To view channel content, tap an icon on the Channel bar, or tap the **Explorer** button to quickly navigate to a channel.

Getting help on Microsoft Windows CE Services

For additional setup, usage, and troubleshooting information, refer to Chapter 8, “Troubleshooting.” Alternately, in the Mobile Devices folder on your primary PC, click **Help**, and then **Windows CE Services Help Topics**.

Nino Basics

The Nino provides several different methods for performing basic operations and entering information. This chapter includes information about:

- Using the hardware buttons
- Using the microphone
- Using the headphone jack
- Adjusting the volume
- Keeping your data safe
- Using the Active Desktop
- Using the Start menu and taskbar
- Using the command bar
- Typing and writing on your Nino
- Using a modem
- Viewing information
- Customizing your Nino
- Finding information

Using the hardware buttons

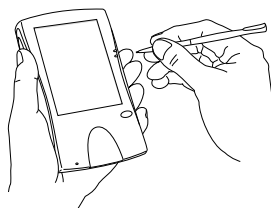
Your Nino has nine hardware buttons located on the front-, left-, and right-side of the device—four Quick Start buttons, an On/Off button, an Exit button, a Scroll down control, a Scroll up control, and an Action button. Using various combinations of these buttons, you can quickly perform basic operations on the Nino. For a diagram of the hardware buttons, see “A tour of the Nino” in Chapter 1.

Hardware button basics

The more you use your Nino, the more familiar the hardware buttons become. The following guidelines will get you started.

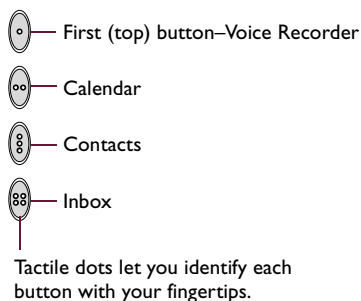
One-handed operation:

You can operate the buttons on the Nino with one hand, leaving the other hand free to use the stylus, or for some other task.



Quick Start buttons:

If the unit is off, pressing a Quick Start button turns it on and starts a program. Pressing and holding a Quick Start button starts a program and creates a new item or entry in the program.



The Quick Start buttons are configurable. To assign a different program to a button, tap **Start**, **Settings**, **Buttons**, and then the **Program** tab.

Useful button combinations

You can press and hold one button, and then press a second button to produce certain results. The following combinations are particularly useful:

Stylus calibration—Press and hold the **Exit** button. Then, while still holding the **Exit** button, press the **Action** button.

Tab—Press and hold the **Action** button. Then, while still holding the **Action** button, press the **Scroll up** control.

Back tab—Press and hold the **Action** button. Then, while still holding the **Action** button, press the **Scroll down** control.

Contrast level—Press and hold the **Exit** button. Then, while still holding the **Exit** button, press the **Scroll up** and/or **Scroll down** control to adjust the screen contrast.

Using the microphone

Position yourself about 8 inches (20 cm) away from the microphone when recording a voice message or giving voice commands. For more information about recording, see “Capturing ideas and thoughts with Voice Recorder,” in Chapter 5.

Using the headphone jack

The headphone jack on your Nino works much the same way as the headphone jacks on other familiar electronic devices. To use headphones with your Nino, simply plug the headphones into the headphone jack. (The headphone jack is located on top of the Nino, next to the stylus holder. For a diagram of its location, see “A tour of the Nino,” in Chapter 1.)

Adjusting the volume

To control the volume of the speaker or headphones, tap **Start**, **Settings**, **Volume & Sound**, and then use the slider to adjust the volume.

Keeping your data safe

Your Nino comes with a non-removable, built-in backup battery that will maintain the integrity of your data in the absence of other power sources. Note these important points:

- You can check the status of the backup battery by tapping **Start**, **Settings**, **Power**, and then the **Battery** tab.
- It may take a few days of normal usage before this backup battery is fully recharged and appears as “good” on the Battery tab. (It recharges when you are plugged in to AC power, or when you are running the Nino using AA batteries.)
- To prevent the backup battery from running down and failing to protect your data, do not leave the Nino for an extended period of time without AA batteries, or without a connection to AC power.
- When the AA batteries become low, replace them promptly.

NOTE Regularly back up your Nino data on your PC using Windows CE Services in case information on your Nino is ever corrupted or lost. Connect your Nino to your PC, and then click Backup/Restore on the Tools menu in the Mobile Devices folder on your PC. Your first backup may take some time, depending on how much information you have on your Nino. Subsequent backups will be faster if you select Incremental.

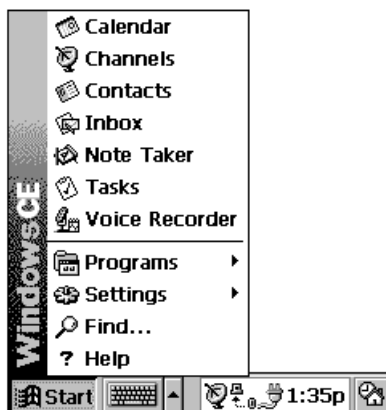
Using the Active Desktop

You can use the Active Desktop to display important information, such as today's appointments and tasks.

To select the type of information you want to display on the desktop, tap **Start**, **Settings**, **Display**, and then **Display Active Desktop**. Select the items that you want to display.

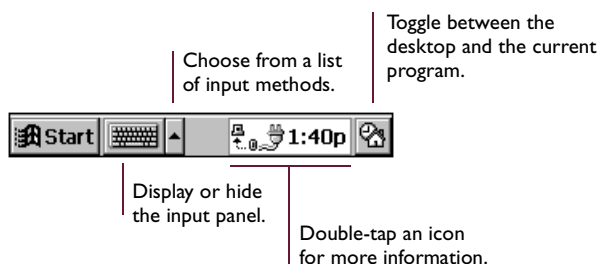
Using the Start menu and taskbar

Use the **Start** menu on the taskbar to switch programs, display settings, find information, and view Help for the current program.



First tap **Start**, then tap the item you want.

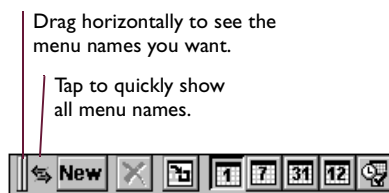
On the taskbar, you can also do the following:



NOTE You can change what you see on the Start menu and taskbar by tapping **Start**, **Settings**, and then **Taskbar**.

Using the command bar

The command bar at the top of the Nino screen includes both menu names and toolbar buttons. You can decide which you want to display.



Typing and writing on your Nino

With your Nino, you can quickly type, write, and draw in the way that's most convenient for you. You can type with the keyboard, write using Jot Character Recognizer or another text input application, or write and draw directly on the screen using your stylus.

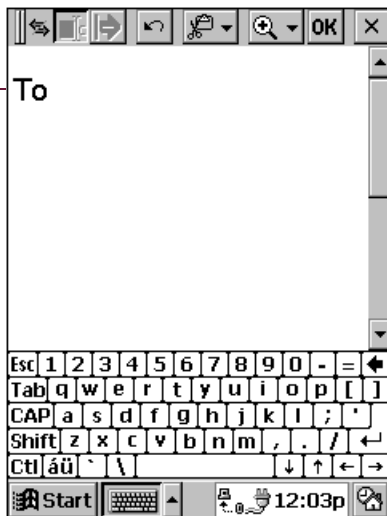
In Note Taker, and in notes that you attach to entries in Calendar, Contacts, and Tasks, you can use your stylus to write on the screen.

First, on your Nino's input panel, select the input method you want to use. Tap the **Input Method** arrow to see your choices. (Alternately, you can tap **Start**, **Settings**, **Input Panel**, and then the **Input Method** tab.)

Typing with the keyboard

To type, tap the **Input Method** arrow and select **Keyboard**. Then, tap the keys with your stylus.

Characters are displayed as you tap them.

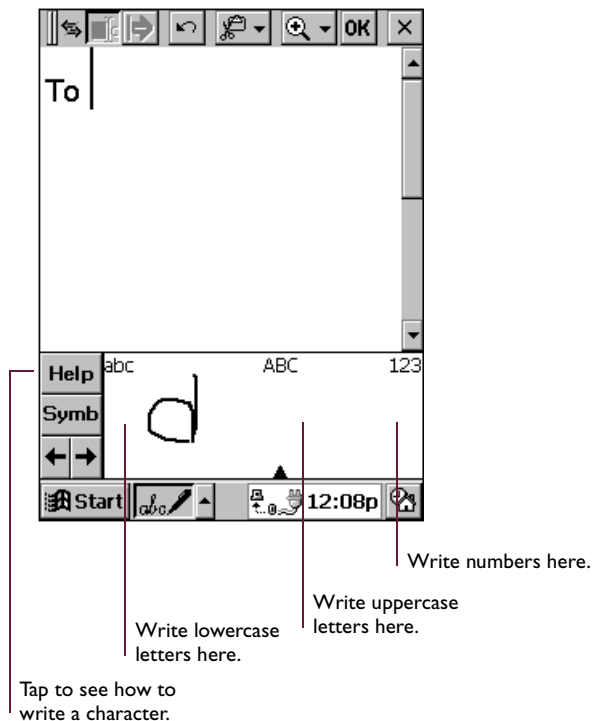


You can adjust keyboard settings to suit the way you work. Tap **Start**, **Settings**, and then **Input Panel**. Select **Keyboard** as the input method, and then tap **Options**. Check the **Use gestures for Space, Backspace, Shift and Enter** checkbox to turn on swipe shortcuts (gestures) on your keyboard. Then, you can do the following:

- To insert a space, swipe across the keyboard from left to right.
- To delete a character, swipe across the keyboard from right to left.
- To enter a carriage return, swipe the keyboard from top to bottom.
- To enter the character in uppercase, starting on a key, swipe up.

Writing using Jot Character Recognizer

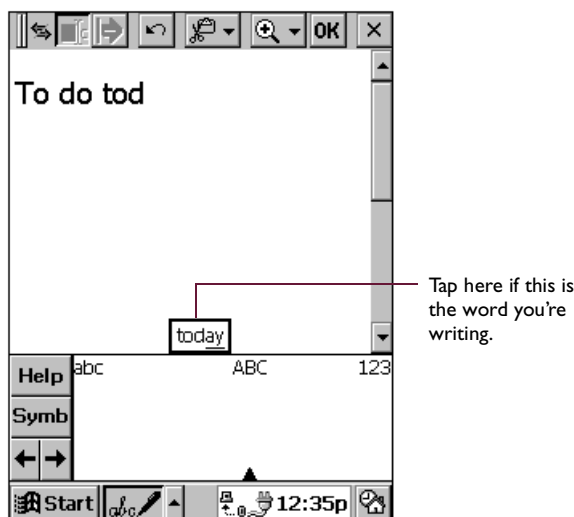
You can use CIC® Jot™ Character Recognizer, to write. Tap the **Input Method** arrow and select **Jot Character Recognizer**. When you write a letter in the box, Jot Character Recognizer converts your handwritten character to typed text that appears on the screen.



You must write some letters in a particular way for Jot Character Recognizer to recognize them. To see how to write letters, tap the **Help** button for an online demonstration.

NOTE Drag your stylus across the panel horizontally from right to left to delete a character. Drag from left to right to type a space.

As you type or write, the Nino anticipates the word you are writing and displays it above the input panel. When you tap the displayed word, it is inserted into your text at the insertion point. The more you use your Nino, the more words it learns to anticipate.



To customize the suggested words, tap **Start**, **Settings**, **Input Panel**, and then the **Word Completion** tab.

NOTE Full documentation of the Jot Character Recognizer application is available on the *Philips Nino CD*. Click the **Manuals** tab on the **Welcome** screen.

Viewing information

Most programs provide a list view, showing the items or files you've already created in that program. You can display the list in the manner that's most helpful for you.

- You can sort the list in a particular column by tapping the column heading.
- In Calendar, Contacts, and Tasks, you can assign entries to particular categories and then filter the list to show a specific category.

- In Note Taker and Voice Recorder, you can place files or messages in folders, and then filter the list to show only the files or messages in a specific folder.

Using a modem

You can use your Nino and a Nino Modem Click-on (U.S.) or a modem cable (Europe) to connect to:

- An Internet Service Provider (ISP) that supports PPP or SLIP protocols. (For more information, consult your ISP.)
- A corporate network through a Remote Access Server (RAS) connection.
- A remote desktop/notebook computer via RAS.
- A remote desktop/notebook computer via dial-up connection.

Some U.S. models of the Nino include the Nino Modem Click-on.

For your convenience, settings information about many ISPs is maintained at the Nino Web site at <http://nino.philips.com/support>. For more information about using your modem device, refer to the *Owner's Guide* that came with it.

Customizing your Nino

You can adjust the settings on your Nino to suit the way you work. Select **Start** and then **Settings** to see the settings available on your Nino.

You might want to adjust the following:

- **Buttons**, to associate program buttons with specific programs and to adjust the Scroll up and Scroll down controls.
- **Owner**, to enter contact information in case your Nino is misplaced.
- **Power**, to maximize battery life.
- **System**, to adjust memory allocation between storage memory and program memory.
- **Password**, to limit access to your Nino.
- **Volume & Sounds**, to customize or turn off sounds.

- **World Clock**, to set the date and time for your location and a second location.
- **Backlight and Contrast**, to adjust backlighting and screen contrast.

For information on a particular setting, you can do either of the following:

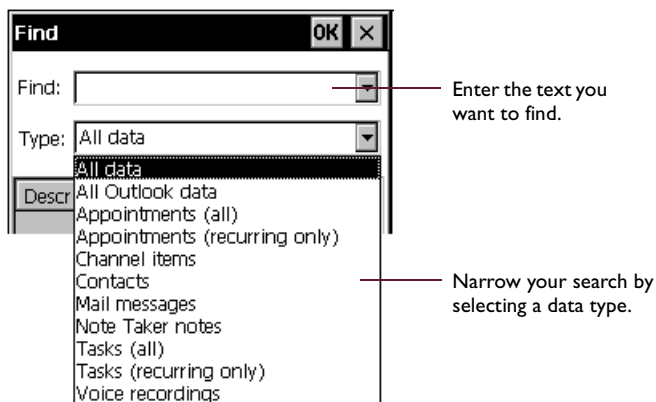
- Open the setting, tap **Start**, and then tap **Help**.
- Open the setting, and then tap and hold on the label of the item you want more information about.



Tap and hold to see a description of the item.

Finding information

The Find feature on your Nino helps you quickly locate information. Tap **Start** and then **Find**. Enter the text you want to find, select a data type, and then tap **OK** to start the search.



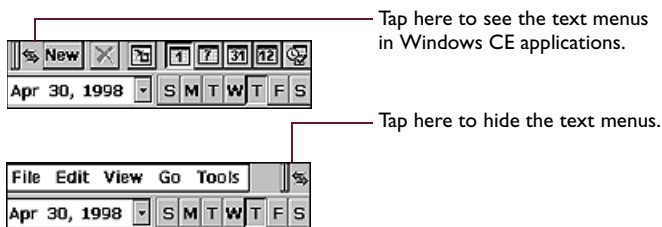
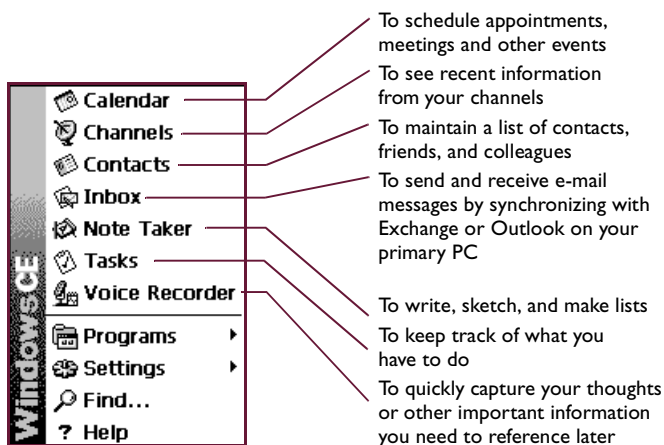
First Steps with Windows CE Software

The basic set of Windows CE programs is installed on your Nino. This chapter includes the information you need to begin using these applications. It includes information about:

- Microsoft Windows CE software
- Starting and exiting an application
- Using infrared communication
- Capturing ideas and thoughts with Voice Recorder
- Creating notes and drawings with Note Taker
- Using Microsoft Pocket Outlook

Microsoft Windows CE software

The programs that are part of Windows CE include:



Other Windows CE applications include Calculator and Solitaire. (You'll find them on the **Programs** menu.)

NOTE Programs that are on your Nino when you buy it are stored in **ROM** (read-only memory) and cannot be removed or lost. You can install additional software, which will be placed in **RAM** (random access memory).

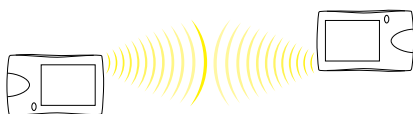
Starting and exiting an application

You can switch to the program you want to use by selecting it on the **Start** menu (tap **Start**, **Programs**, and then the program you want to start), or by pressing the corresponding Quick Start button.

You may be accustomed to exiting an application on your primary PC when you're through using it. That's not necessary on the Nino. The Windows CE operating system is designed to handle multiple programs running at the same time. However, if you do want to exit a program, tap **Start**, **Settings**, **System**, and then **Task Manager**. Select the program you want to exit and tap **End Task**.

Using infrared communication

You can use infrared (IR) beaming for wireless transfer of information between your Nino and another Nino, or any other Windows CE device that is IR-ready.



Some useful tips

- Position the Nino IR port and the IR port of the other device so that they are lined up and within three feet (one meter) of each other.
- Make sure that neither IR port is blocked.
- Turn off fluorescent lights in the immediate area. (Some types of fluorescent lamps can interfere with IR communications.) Or, move to a location with different lighting.

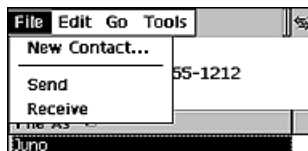
Sending and receiving

You can transfer notes, contacts, or voice recordings between devices when both are in the same program.

To send or receive contacts, choose the **Contacts** program, and select one or more contacts from the list. Then, tap the menu control in the upper left corner to show the text menus. Then, on the **File** menu, choose **Send** or **Receive**.



Tap here to see the text menus



To send or receive a note, go to the **NoteTaker** program, select a note from the list of notes, and then, on the **File** menu, choose **Send To** and **Infrared Recipient** or **Receive**.

To send or receive a voice recording, go to the Voice Recorder program, choose a recording from the list of voice recordings, and then, on the **File** menu, choose **Send To** and **Infrared Recipient** or **Receive**.

Capturing ideas and thoughts with Voice Recorder

Quickly capture thoughts and reminders, ideas, and phone numbers with Voice Recorder. Use it in the way that's most convenient for you—by using the hardware buttons on your Nino, or the buttons on your screen.

Using the hardware buttons

You can use the top Quick Start button on your Nino to record and play recordings one-handed, so while you're driving, for example, you can keep your eyes on the road.

Making a recording

To	Do This
Record	Press and hold the top Quick Start button. You'll hear one beep when it's ready to record.
Stop recording	Release the top Quick Start button. You'll hear two beeps when recording stops.

Playing a recording

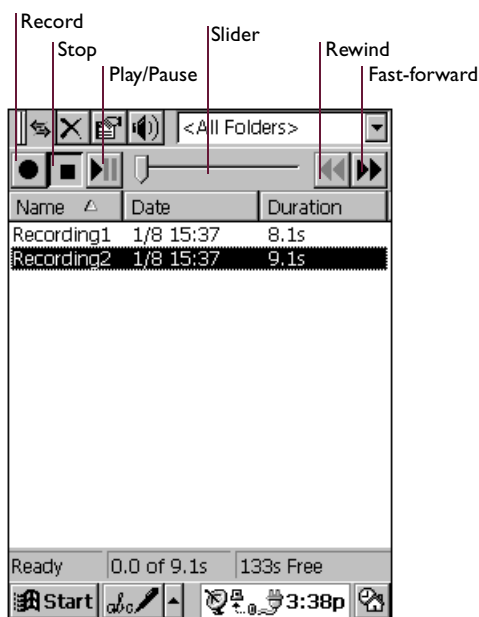
To	Do This
Play	Press the Action button.
Pause/resume	Press the Action button.
Stop	Press the Exit button (returns to the beginning of the recording).
Play all	Press the Action button twice (plays all messages in the list).

Navigating

To	Do This
Rewind, while playing	Press and hold the Scroll up control.
Scroll through the list of recordings	Press and quickly release the Scroll up or Scroll down control.

Using the screen buttons

Instead of using the hardware buttons, you can tap the buttons on your screen to record and play your recordings. A progress bar and a status bar provide visual indications of the process.



NOTE To skip part of a recording, move the slider to any place in the recording before you play it.

Adjusting memory

If your Nino runs out of memory while recording, you'll hear several beeps and see an out-of-memory message on your screen. You can adjust the allocation of memory on your device by tapping **Start**, **Settings**, **System**, and then the **Memory** tab. If you run out of memory frequently, you might consider buying a CompactFlash card for your Nino. (For more information about CompactFlash cards, see Chapter 6.)

Choosing a recording format

Voice Recorder uses a format called Mobile Voice to compress files, making them 25 times smaller than the original size. This allows you to store more recordings, although the sound quality is less than optimal. For the best sound quality, choose among the available PCM format options. These files will be larger than those stored in Mobile Voice format. To switch formats, tap **Tools** and then **Recording Format**.

NOTE Voice Recorder uses approximately 300 bytes per second for recording, using the Mobile Voice format. For example, a 10-second note uses approximately 3K.

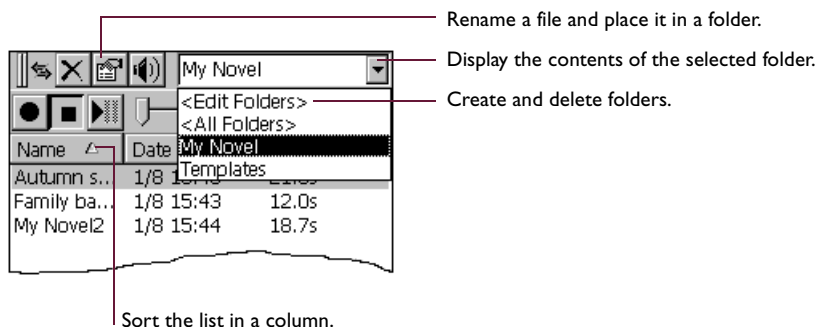
Your recordings are saved as .wav files, which you can transfer to your primary PC for playback, editing, and archiving. You will need software for your primary PC that can play .wav files, and you'll need the same codec used to make the recording. You can get the Mobile Voice codec by installing Windows CE Services or by visiting the Microsoft Windows CE Web site at <http://www.microsoft.com/windowsce/default.asp>.

Organizing your recordings

Your recordings are saved automatically and given the names Recording1, Recording2, and so on, by default. These recordings are listed in the Voice Recorder window. To quickly rename a recording, tap it to select it, tap it again, and then enter the new name.

You can organize your recordings by renaming them and placing them in folders. For example, you can create a folder called My Novel and place all relevant recordings in that folder.

If you display recordings for a particular folder in the Voice Recorder window, any new recordings you make while that folder is selected will be placed in that folder. They are given the folder name and an incremental number (My Novel1, My Novel2, and so on).

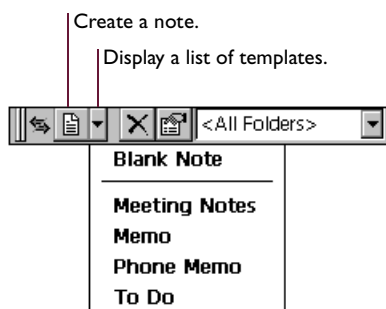


Creating notes and drawings with Note Taker

Note Taker with Rich Ink technology makes it easy to write, sketch, and make lists quickly, the way you're used to writing on paper.

- To use Note Taker, tap **Start**, then **Note Taker**.

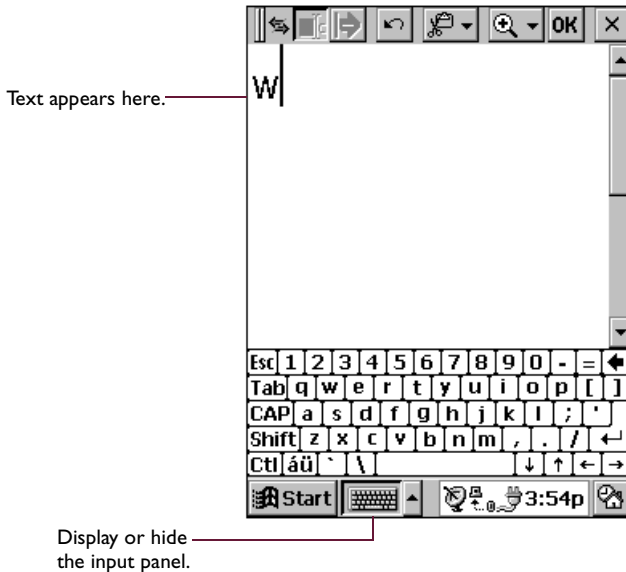
You can create a new note by tapping the **New** button, or you can tap the **New** arrow and tap a template to start with a note in which the formatting and structure are already in place.



Entering information

With Note Taker, you can enter information in the way that's easiest for you. You can use the input panel to type using the keyboard, or you can write using Jot Character Recognizer, or other text input applications. You can also write and draw directly on the screen.

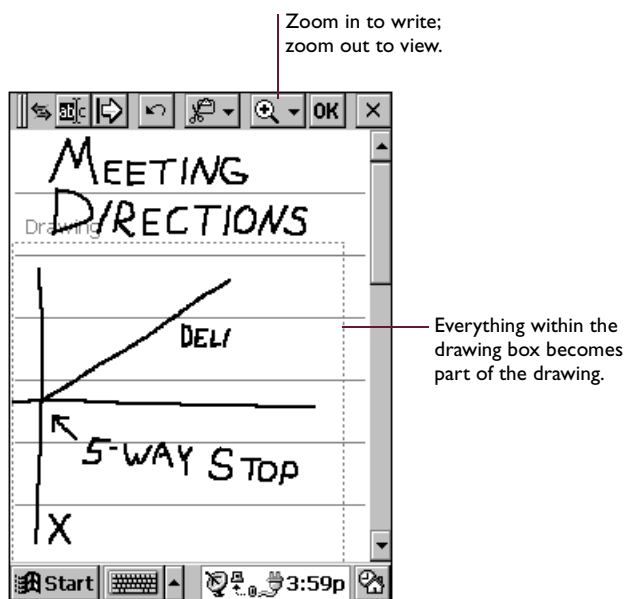
When you display the input panel, you'll see the insertion point, indicating where the text will be placed.



When you hide the input panel, the insertion point disappears, and you can write or draw anywhere on the screen.

Writing and drawing

You can use your stylus to write and draw directly on the screen.



To create a drawing, on your first stroke, cross three ruled lines. A drawing box appears. Subsequent strokes in or outside the border of the drawing box become part of the drawing.

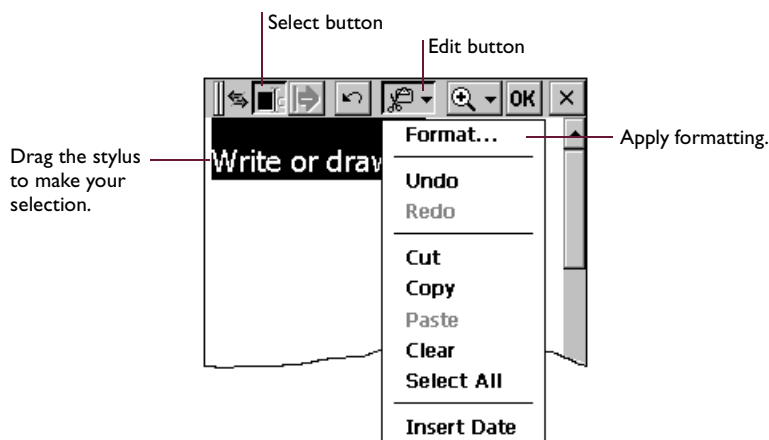
NOTE You might want to switch to full-screen display so that you can see as much as possible on the screen. Tap **View**, then **Full Screen**. Tap **Restore** to see the command bar again.

Editing and formatting a note

You can edit text you've entered using the keyboard or other input methods. You can also edit handwritten notes and sketches. To select the text or picture you want to edit, hide the input panel, tap the **Select** button, and drag your stylus over the text or drawing.

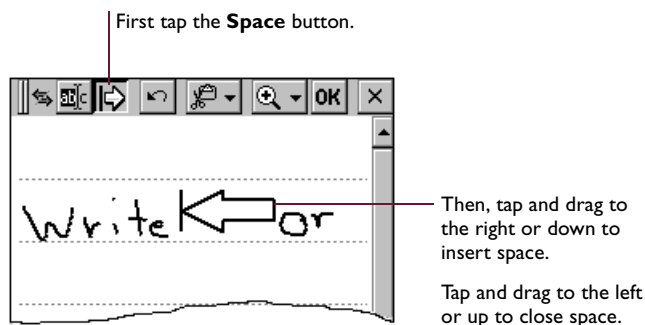
NOTE Instead of tapping the **Select** button, you can press and hold the **Action** button as you drag the stylus.

Tap the **Edit** button to see your editing options. The options available depend on what you've selected—text, handwriting, or a drawing.



You can apply formatting to a selection, or you can set default formatting that will be applied to everything you then type, write, or draw.

You can also use the **Space** button to increase or decrease the space between elements on your screen.



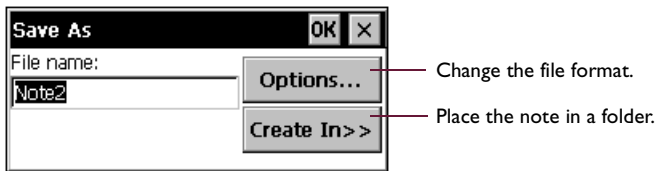
NOTE Instead of tapping the Space button, you can insert and remove space by pressing and holding the Exit button as you drag the stylus.

Saving your notes

When you've finished a note, tap **OK** to save it and return to your list of notes. Note Taker automatically names your note as follows.

- The first 21 characters of the first line of typed text are used as the note name.
- If no text is included in the note, but the note has been assigned to a folder, the notes are given the folder name and an incremental number (Tradeshow1, Tradeshow2, and so on).
- If no text is included and no folder is assigned, the notes are named Note1, Note2, and so on.

To name a note yourself, to place it in a folder, or to change the file format, tap **File** and then **Save As**.

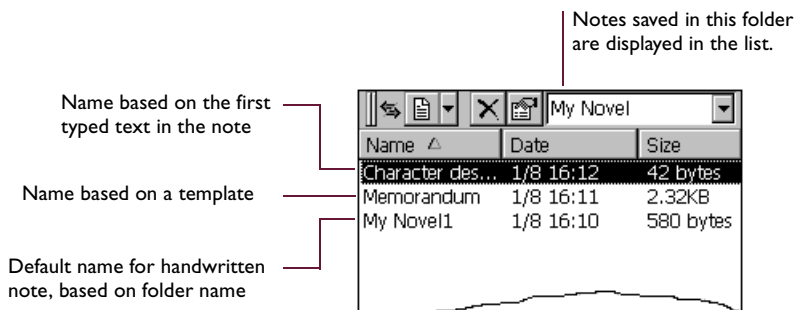


Each note in Note Taker is a file. Note Taker files are saved in Note Taker (.pwi) format, which synchronizes with Microsoft Word files. You have two additional choices for file formats:

- To import the file into a program that supports rich text, save the note in **Rich text format** (.rtf). Handwritten words and drawings will be lost.
- To import the file into a program that does not support rich text, save the note as a **Text only note** (.txt). Handwritten words and drawings, and all formatting, will be lost.

Organizing your notes

You can keep track of your notes by renaming them and placing them in folders. For example, you can create a folder called My Novel and place all relevant notes in that folder. All the notes in the selected folder appear in the list view.



Using Microsoft Pocket Outlook

The Microsoft Pocket Outlook program includes Calendar, Contacts, Inbox, and Tasks. Using Windows CE Services, you can synchronize information in Microsoft Outlook, Microsoft Schedule+, or Microsoft Exchange on your primary PC with your Nino. Each time you synchronize, Windows CE Services compares the changes you made on your Nino and primary PC and updates both computers. (For more information about synchronizing, see Chapter 3.)

Calendar, Contacts, and Tasks have a card view and a list view. The card view is where you enter or view the details for each entry. The list view is where you view all entries.

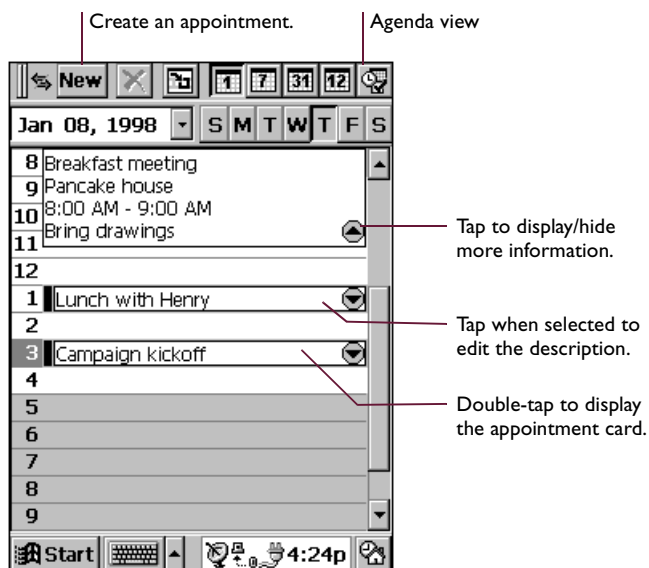
You can switch to these programs at any time by tapping them on the **Start** menu.

NOTE More information on the procedures described here, as well as information on additional procedures, can be found in online Help on the Nino. Tap **Start**, **Help**, and then the item for which you want more information.

Using Calendar to schedule meetings and appointments

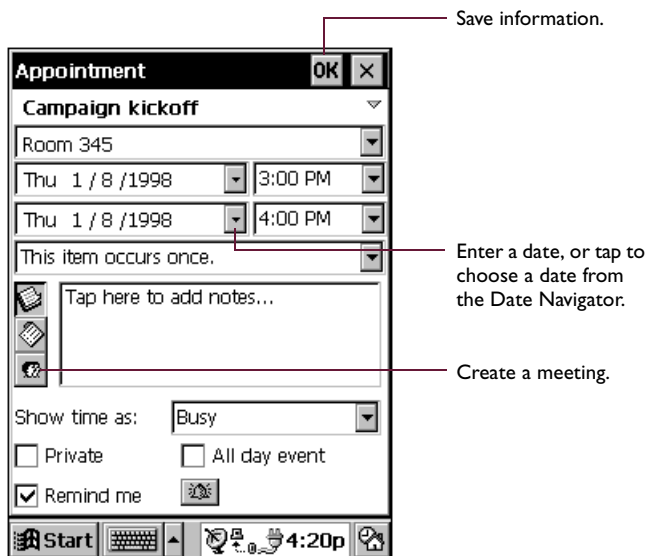
Use Calendar to schedule appointments, meetings, and other events. Check your appointments in one of several views (Day, Week, Month, Year, and Agenda). Switch among the views by tapping the corresponding command bar button.

NOTE You can display today's appointments on your Active Desktop. Tap **Start**, **Settings**, **Display**, **Display Active Desktop**, and then select **Appointments**.



Enter the details for an appointment on the appointment card.

NOTE You can quickly display a new appointment card by pressing and holding the Calendar program button.



If you need to schedule a meeting with people who use Outlook, Pocket Outlook, or Schedule+, you can use Calendar to schedule the meeting. When attendees receive a meeting request, they can accept or decline the meeting. If they accept, the meeting is automatically added to their schedule. In addition, their response is automatically sent back to you, and Pocket Update updates the calendar on your Nino the next time you synchronize with your primary PC.

Before you can send a meeting request, you will need to enter e-mail addresses in Contacts and set up Inbox to send and receive messages. For information on using Contacts and Inbox, see “Using Contacts to track friends and colleagues” and “Using Inbox to send and receive e-mail messages,” later in this section.

To create a meeting request:

- 1** Tap **Tools, Options**, and then select **Windows CE Inbox Services**.
- 2** Tap **File** and then **Make Meeting**.
- 3** Enter the meeting information.
- 4** Select the contacts you want to invite.
- 5** Select other desired options and then **OK**.

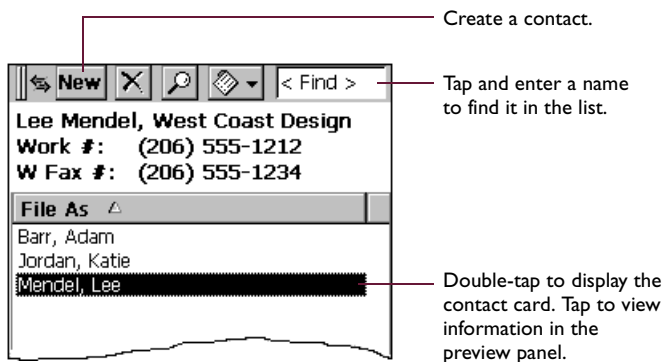
Inbox automatically creates a meeting request and sends it to the attendees the next time you synchronize with your PC.

NOTE Your Nino will remind you about your appointments and meetings by sounding an alarm, flashing the notification light, or displaying a message on the screen. To change how you are notified, tap **Tools** and then **Options**. Tap the **Alarm** button and then **Reminder Options**.

Using Contacts to track friends and colleagues

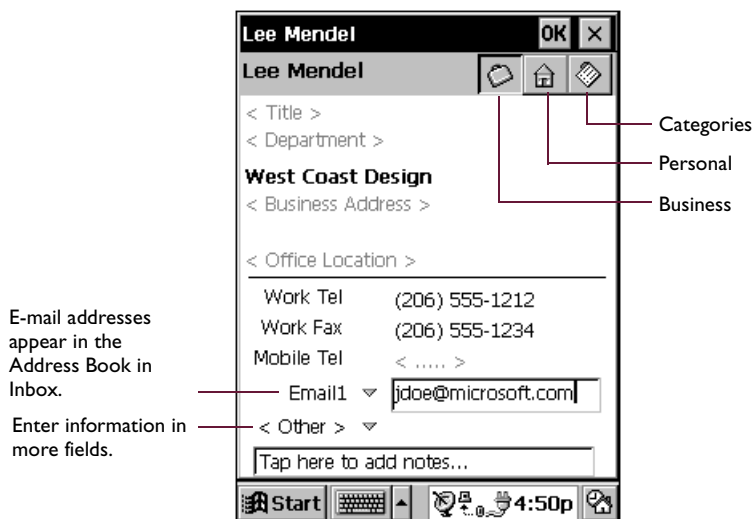
Contacts maintains a list of your friends and colleagues so that you can easily find the information you're looking for, whether you're at home or on the road. Using the IR port, you can also quickly share Contacts information with other Windows CE-based mobile device users.

NOTE You can quickly create a contact card by pressing and holding the **Contacts** program button.



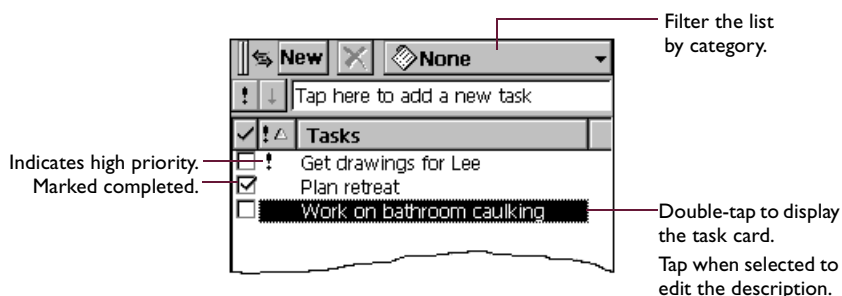
Enter the details for a contact on the contact card. You can enter both business and personal information.

NOTE To change the type of information that appears in your list, tap **Tools** and then **Customize Columns**.

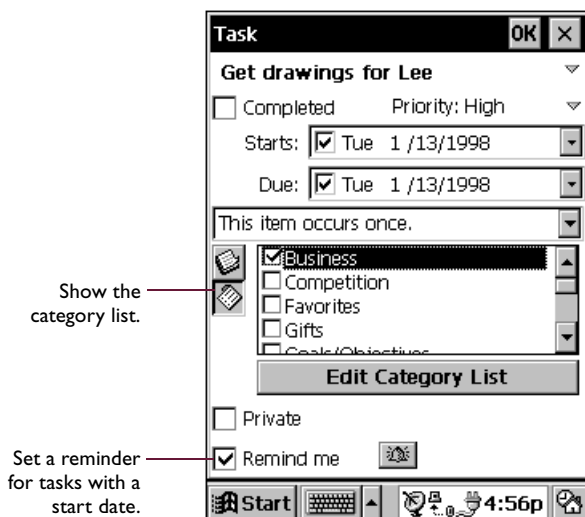


Using Tasks to keep a “to do” list

Use Tasks to keep track of what you have to do. Overdue tasks are displayed in bold.



Enter the details for a task on the task card. You can assign a task to a category, and if you associate a date with a task, you can set a reminder for it.



All active tasks (tasks that have a start date before the current date and are not marked completed) are displayed in the Active Tasks box in the Agenda view of Calendar.

Using Inbox to send and receive e-mail messages

Use Inbox to send and receive e-mail messages in either of these ways:

- Synchronize messages with Microsoft Exchange or Microsoft Outlook on your primary PC. Or transfer individual messages using Windows CE Inbox Transfer.
- Send and receive messages using a dial-up connection to an ISP or a network. For more information about connecting to an ISP or a network, see the *Owner's Guide* that came with your modem device.

NOTE Sending and receiving messages using a dial-up connection requires a modem device. Some U.S. models of the Nino include the Nino Modem Click-on. For more information, see “Using a modem” in Chapter 4.

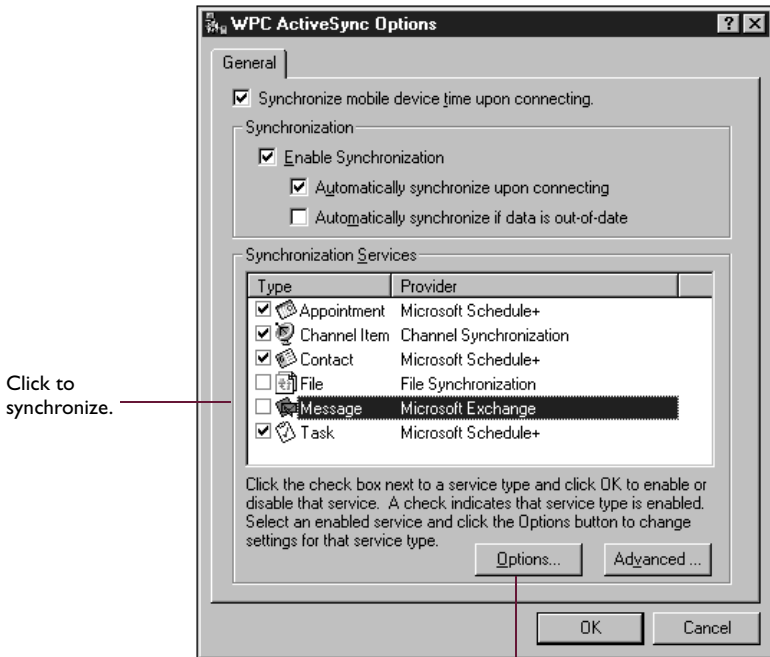
Synchronizing messages

E-mail messages can be synchronized as part of the general synchronization process described in Chapter 3. During synchronization:

- Messages are copied from the Inbox folder of Exchange or Outlook on your primary PC to the Inbox folder on your Nino. The messages on the two computers are linked, so when you delete a message on your Nino, it's deleted from your primary PC the next time you synchronize.
- Messages in the Outbox folder on your Nino are transferred to Exchange or Outlook, and then sent from those programs.

Features available on your primary PC, such as scheduling meetings and selective downloading of file attachments, are also available on your Nino.

By default, e-mail synchronization is turned off. To turn on e-mail synchronization, in the Mobile Devices window on your primary PC, click **Tools, ActiveSync Options**, select **Message**, and then click **OK**.



NOTE After you've selected **Enable Synchronization**, you can set message synchronization options by closing the dialog box and then reopening it. Select **Message**, and then click **Options**.

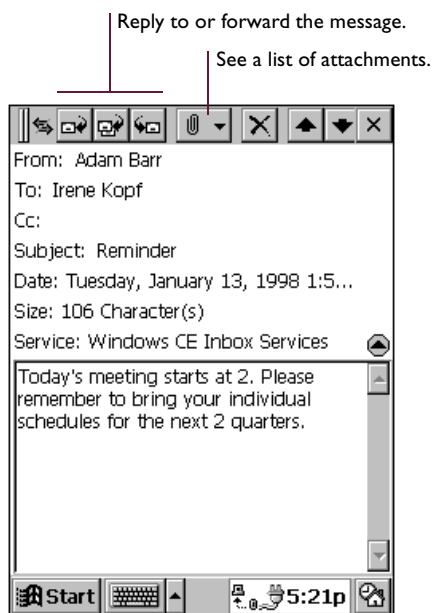
Using Windows CE Inbox Transfer

You can use Windows CE Inbox Transfer to copy or move specific messages between Exchange or Outlook and your Nino, and you can move them into folders other than the Inbox. The messages on the two computers will not be linked. You can modify or delete messages from one location without affecting the other.

To transfer messages, connect the Nino to the primary PC. In either Exchange or Outlook, click **Tools**, then **Windows CE Inbox Transfer**, and then indicate what you want to do.

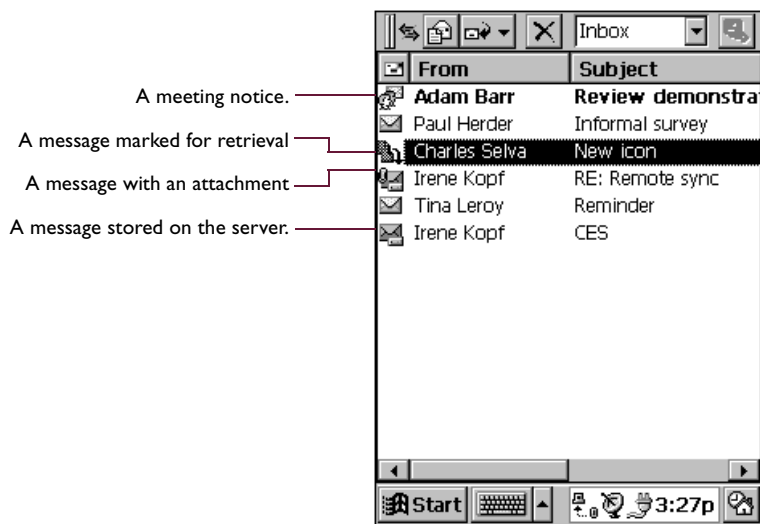
Receiving messages

When you receive a message, double-tap it to open it.



When you synchronize with your primary PC, Inbox only downloads the first 50 lines of each new message. The original messages remain on the mail server on your primary PC.

You can mark the messages that you want to retrieve in their entirety the next time you synchronize or connect to your mail service. Select the message, tap **Service**, and then tap **Retrieve Full Copy**. The icons in the Inbox message list give you visual indications of message status.



You specify your downloading preferences when you set up your synchronization options. You can change them at any time.

- To change Inbox delivery options for mail synchronization, in the Mobile Devices window on your primary PC, select your Palm-size PC icon, click **Tools**, and then click **ActiveSync Options**. Select **Message** and then click **Options**. (For the Options button to be available, you must have previously turned on message synchronization.)

You'll need to download a full message before you can view its attachments.

To process meeting requests, you'll need to download the complete message, either by marking specific messages for downloading or by choosing to download all messages completely during the service setup. In addition, make sure to turn on the **Meeting requests** option during the service setup.

Sending messages

To compose a new message, tap the **New Message** button on the toolbar. You can enter an e-mail address in the To box, or you can select a name from the Address Book. All e-mail addresses entered in the e-mail fields in Contacts appear in the Address Book.

To send your message, tap **File** and then **Send**. Messages are placed in your Outbox folder on your Nino. They are transferred to the Outbox folder in Exchange or Outlook on your primary PC the next time you synchronize.

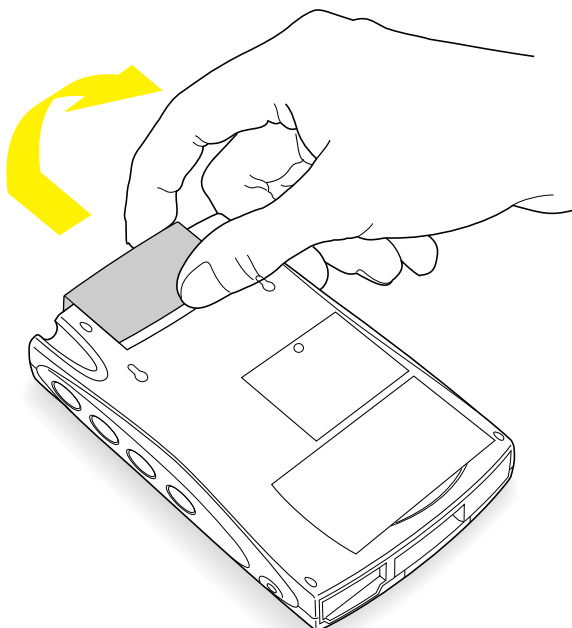
Adding a CompactFlash Card

You can install a CompactFlash card in your Nino.

NOTE If you install a CompactFlash data storage card, you can store some applications on the card, as well as data from certain applications, such as Voice Recorder and Note Taker. Please be aware that you cannot use a CompactFlash data storage card to store data from all applications that come on your Nino.

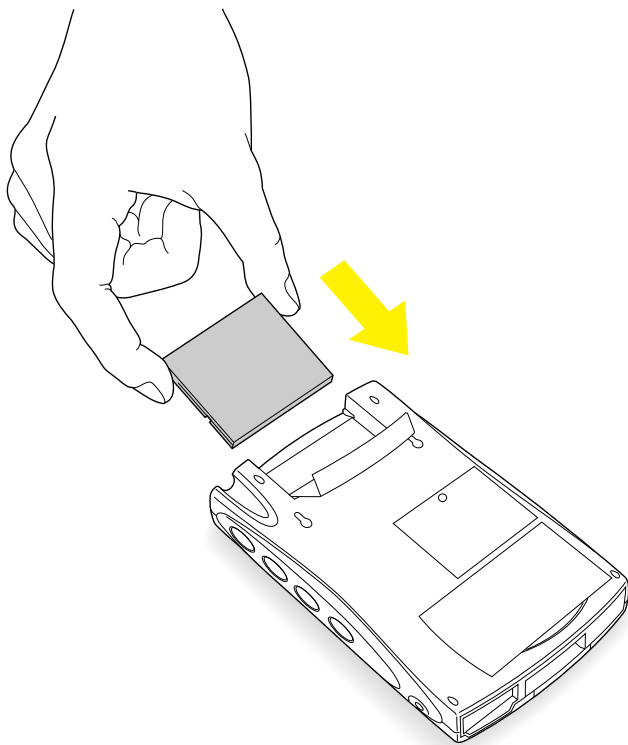
To install a CompactFlash card:

- 1 Open the door to the CompactFlash card compartment on the back of your Nino.
Push the door up and then flip it up. (The Nino can be on or off.)
- 2 Identify the connecting edge of the card. (There may be an arrow symbol on the card to help you do this.)



3 Insert the CompactFlash card.

Make sure the ridge on the back edge of the card is facing up. This allows you to easily remove the card.



4 Close the door.

If you installed a CompactFlash data storage card, you now have the option of saving data to the card. In NoteTaker, for example, create a new note and then, on the **File** menu, choose **Save As**. Tap **Option** and then the location arrow to choose the storage card. For information about other kinds of CompactFlash cards, refer to the documentation that comes with the cards.

Taking Care of Your Nino

The following guidelines will help you get the most out of your Nino 500. Follow them carefully for years of worry-free use.

General handling

Avoid dropping the Nino. Keep it away from extremes of hot or cold.

Screen care

Use only the Nino stylus to write or tap on the Nino screen. Using a pen or other sharply pointed object can cause damage. Protect the screen from scratches. For information on cleaning the screen, see “Cleaning and maintenance” later in this chapter.

Battery management

Conserve battery life by taking these steps:

- Recharge the batteries (rechargeable battery pack and non-removable backup battery) while you're on the road by plugging in the Nino with the AC adapter whenever possible.
- Change your Nino's default shut-off time when running on batteries. The default is three minutes. On the **Settings** menu, choose **Power**, and then the **Power Off** tab.
- Adjust the backlight settings to conserve resources. Tap **Start**, **Settings**, **Backlight and Contrast**, and then the **Backlight** tab. In the “Using Battery” area, slide the slider to “dimpest.” Check the **Dim the backlight when device is idle more than** checkbox, and select a low number from the corresponding list.
- Turn off sounds you don't need to hear. On the **Settings** menu, choose **Volume & Sounds**.
- Be aware that modem devices and CompactFlash cards use more power. When possible, dock your Nino before you use these accessories.
- If you want to use AA batteries with your Nino, Philips recommends that you use lithium batteries (not alkaline). While it's safe to use alkaline batteries, your Nino runs optimally with lithium AA batteries or the rechargeable battery pack.

Cleaning and maintenance

Clean your Nino casing with a damp, soft cloth. To clean the screen, turn off the unit and then use a damp cloth or a moistened pad designed specifically for computer monitor screens.

Erasing all your data and settings

If you want to erase all data and settings from your Nino, you can perform a hard reset. This will also erase any partnership information with your PC. (You may want to back up your Nino before you take this step.) To perform a hard reset, hold down the **On/Off** button and then use the end of a paper clip to press the recessed **Soft Reset** button on the back of the unit. For more information about the location of the Soft Reset button, see “A tour of the Nino” in Chapter 1.

CAUTION All data and settings will be permanently erased when you perform a hard reset. This action cannot be undone.

Avoiding electrostatic discharge

In circumstances such as low humidity and walking on synthetic carpets, your body may build up a charge of static electricity. It is a good idea to touch a metal object such as a file cabinet handle before you touch your Nino or the Nino Dock.

And finally...

For worry-free use of your Nino, dock it whenever you're near your PC. This recharges the backup battery (if your Nino Dock is plugged into AC power), and synchronizes information with your PC. Make sure to back up your Nino often. Docking and backing up frequently protects your data.

To greatly improve the performance of your Nino, periodically perform a “soft reset.” To perform a soft reset, using the end of a paperclip, press the recessed **Soft Reset** button on the back of the unit. (For more information about the location of the Soft Reset button, see “A tour of the Nino” in Chapter 1.) Alternately, tap **Start, Programs**, and then **Reset**. This restarts the Nino without erasing any stored information.

Troubleshooting

Before you call Philips Customer Support, please review the information in this chapter. If you can't find an answer to your problem here, refer to online Help, the Nino Web site (<http://nino.philips.com/support>), and/or the Microsoft Windows CE Web site (<http://www.microsoft.com/windowsce/default.asp>). This chapter includes the following information:

- General troubleshooting
- Connecting your Nino to your primary PC
- Other issues

General troubleshooting

I get a screen message saying the backup battery is running low and I should replace it.

The rechargeable backup battery on the Nino is not removable. Dock the Nino or plug it in with the AC adapter in order to recharge the backup battery, or replace the AA batteries.

Tapping the screen doesn't seem to work or produces unexpected results.

You may need to recalibrate the Nino. Hold down the **Exit** button, and then press the **Action** button to display the **Calibration** screen. Follow the instructions that appear on your screen.

The Nino screen is frozen and nothing happens when I tap the screen or press the Quick Start buttons.

Using the end of a paperclip, press the recessed **Soft Reset** button on the back of the unit. This restarts the Nino without erasing any stored information. For more information about the location of the Soft Reset button, see "A tour of the Nino" in Chapter 1.

Even after pressing the Soft Reset button, the screen is still frozen.

Remove the batteries. Plug in the Nino to AC power and then use the end of a paperclip to press the recessed **Soft Reset** button on the back of the unit. For more information about the location of the Soft Reset button, see "A tour of the Nino" in Chapter 1.

My battery doesn't last long enough.

See "Battery management" in Chapter 7.

I get a screen message saying the Nino is "Out of storage memory."

Your Nino comes with a fixed amount of memory, which can be used for storing data or running programs. You can increase the amount of memory allocated for storage. Tap **Start**, **Settings**, **System**, and then the **Memory** tab. Move the slider to the right. If no additional memory is available for storage, you can exit one or more applications using the **Task Manager** tab and then move the slider.

I don't like the sound quality I get when I record a voice memo.

If you use Voice Recorder to record a voice memo, you can choose a recording format that will provide the quality of sound you find acceptable. (The higher the quality, the more storage memory required for your recording.) The format that requires the least storage memory is **Mobile Voice**.

To change the recording format, tap **Start**, and then **Voice Recorder**. Then tap the menu display control in the upper left corner to show the menus. On the **Tools** menu, select **Recording Format**. From the **Format** list, select either the **Mobile Voice** or the **PCM** option. If you select **PCM**, select a level of quality from the **Attributes** list. The higher the KB/s number (kilobytes per second), the higher the sound quality and the higher the memory requirement.

Can I make a dial-up connection between my Nino and America Online (AOL), or Prodigy Classic?

No. At this time, Microsoft Windows CE Services does not support connections to AOL or Prodigy Classic. Microsoft Windows CE Services can only connect to an Internet Service Provider (ISP) that supports PPP or SLIP protocols. AOL and Prodigy Classic do not support PPP or SLIP protocols. For more information, see Chapter 4, "Using a modem."

I need to know what version of software my Nino uses.

At some point, you may need to know what version of software your Nino uses (for example, if you call Philips Customer Support). To determine which version of Nino software you have, tap **Start**, **Programs**, and then **VersionInfo**. Version information appears.

Connecting your Nino to your primary PC

How do I check and, if necessary, change the communication speeds (baud rates) on my Nino and primary PC so that they are the same?

To check or change the communication speed (baud rate) of your Windows 95/98 primary PC and Nino so that they are the same:

- 1** On the Nino, tap **Start**, **Settings**, **Communications**, and then the **PC Connection** tab.
- 2** Make sure the **Enable direct connections to the desktop computer** checkbox is checked.
- 3** By default, the tab says “Serial @ 19200” indicating that the Nino is set to communicate with your primary PC at 19200 Kbps. To change the communication speed of your Nino, tap **Change Connection**, and select a new speed from the **Change Connection** list.
- 4** On your primary PC, in the Mobile Devices window, click **File**, and then **Communications**.
- 5** In the middle of the screen, there is a box called **Device Connection Via Serial Port**. This box tells you the communication speed of your primary PC. If the speed is different than the communication speed that you selected for your Nino in steps 1–3, you must change it.
- 6** To change the communication speed, on the **Start** menu, click **Settings**, and then **Control Panel**.
- 7** Double-click the System icon, and then the **Device Manager** tab.
- 8** Double-click the port to which the Nino is connected. The Properties window appears.

- 9 Click the **Port Settings** tab.
- 10 In the **Baud Rate** box, select the same speed that you selected for your Nino in step 3, and then click **OK**.
- 11 Click **OK** to close any open windows, and then save the changes.
- 12 Reboot your primary PC.

To check or change the communication speed (baud rate) of your Windows NT primary PC and Nino so that they are the same:

- 1 On the Nino, tap **Start, Settings, Communications**, and then the **PC Connection** tab.
- 2 Make sure the **Enable direct connections to the desktop computer** checkbox is checked.
- 3 By default, the tab says “Serial @ 19200” indicating that the Nino is set to communicate with your primary PC at 19200 kbps. To change the communication speed of your Nino, tap **Change Connection**, and select a new speed from the **Change Connection** list.
- 4 On your primary PC, in the Mobile Devices window, click **File**, and then **Communications**.
- 5 In the middle of the screen, there is a box called **Device Connection Via Serial Port**. This box tells you the communication speed of your primary PC. If the speed is different than the communication speed that you selected for your Nino in steps 1–3, you must change it.
- 6 To change the communication speed, tap **Start** menu, click **Settings**, and then **Control Panel**.
- 7 Double-click the ports icon, and then the port to which the Nino is connected.
- 8 In the **Baud Rate** box, select the same speed that you selected for your Nino in step 3, and then click **OK**.
- 9 On the **Start** menu, click **Control Panel**, and then double-click the modem icon.

- 10** On the **Dial-up Networking Serial Cable between 2 PCs** list, click the port to which the Nino is connected, and then click **Properties**. Make sure that, in the **Maximum speed** box, the speed indicated matches the speed that you selected for your Nino in steps 3, and for your primary PC in step 5.
- 11** Click **OK** to close any open windows, and then save the changes.
- 12** Reboot your primary PC.

When I dock my Nino, my primary PC automatically attempts to connect to the Internet.

You may need to turn off the auto connect feature on Internet Explorer. When you dock the Nino, a network is created between the Nino and your primary PC. Your PC accomplishes this through a program called Direct Cable Connection, which is an extension of the Dial-up Networking Service, the same Windows 95 feature that allows you to connect to the Internet. The problem occurs when the docked Nino accesses an adapter called the Dial-up adapter. The browser is set to acknowledge that the Dial-up adapter is only used for connections to the Internet, so it opens the Internet connection screen. Depending on whether you have Internet Explorer 4.x, or Internet Explorer 3.x, there are two procedures for turning off the auto connect feature. Both procedures follow.

To turn off the Internet Explorer 4.x auto-dialer:

- 1** Open Internet Explorer.
- 2** Click **View, Internet Options**, and then the **Connection** tab.
- 3** Select **Connect via LAN**.
- 4** Reboot the primary PC.

NOTE Remember that after making this change to your Internet Explorer setup, when you want to connect to your ISP, you will have to do so manually using Dial-up Networking. Once you are connected, start Internet Explorer, and browse as normal.

To turn off the Internet Explorer 3.x auto-dialer:

- 1** Open Internet Explorer.
- 2** Click **View**, **Internet Options**, and then the **Connection** tab.
- 3** Un-check the **Connect to the Internet as needed** checkbox.
- 4** Reboot the primary PC.

NOTE Remember that after making this change to your Internet Explorer setup, when you want to connect to your ISP, you will have to do so manually using Dial-up Networking. Once you are connected, start Internet Explorer, and browse as normal.

I have more than one device using a Dial-up Adapter, and there are conflicts.

You may need to install Microsoft Windows 95 Dial-Up Networking Upgrade Version 1.2. The upgrade is located on your *Windows CE Services CD*. The installation procedure follows.

Before you start, save the work on your PC and quit all programs. You may need to use your *Windows 95 CD* during the installation process.

To install Microsoft Windows 95 Dial-Up Networking Upgrade Version 1.2:

- 1** On the *Windows CE Services CD*, open **Optional Components**.
- 2** In **Optional Components**, open **Microsoft Windows 95 Dial-Up Networking Upgrade version 1.2**.
- 3** To start the installation process, double-click **msdun12.exe**.
- 4** Reboot the PC, and start Windows 95.
- 5** If you get a message telling you to insert the *Windows 95 CD*, do so. Then reboot the PC again, and start Windows 95.
- 6** Use the New Partnership Wizard to establish the Nino-to-PC partnership.

Can I connect to my Nino through the infrared port on my Windows NT notebook computer?

No. Windows NT 4.0 does not support infrared communication.

I am having trouble connecting my Nino to my primary PC.

Perform the following tasks, one-by-one, until you can successfully connect your Nino to your primary PC:

- Follow the cable that connects your primary PC and Nino Dock to the back of the primary PC. Make sure that the cable is firmly plugged into a 9-pin serial port. To make sure the connection is firm, turn the two screws on the connector clockwise to securely fasten the cable to the port.
- Remove the Nino from the Nino Dock, and wait 15 seconds before replacing the Nino in the Nino Dock. To make sure the Nino is placed firmly in the Nino Dock, press the top of the Nino with two fingers and apply gentle pressure.
- Remove the Nino from the Nino Dock, and perform a soft reset. To perform a soft reset, use a paperclip to press the recessed **Soft Reset** button on the back of the Nino. For more information about the location of the Soft Reset button, see “A tour of the Nino” in Chapter 1. Alternately, perform a soft reset by tapping **Start, Programs**, and then **Reset**. Once the reset is complete, replace the Nino firmly in the Nino Dock.
- Make sure that your Nino is plugged into the correct serial port.
- Make sure that your Nino and your primary PC are both communicating at 19200 Kbps. To check or change the communication settings, see “How do I check and, if necessary, change the communication speeds (baud rates) of my Nino and primary PC so that they are the same?” earlier in this section.
- Close all applications on your primary PC. Open applications, such as proxy servers, existing modem connections, and all software that uses the COM port to which the Nino is connected, may conflict with your Nino-to-PC connection.
- If your primary PC runs a proxy server, make sure that it is configured to recognize the Nino’s IP address—192.168.55.100

- Perform a hard reset on your Nino. This will erase all data and settings from your Nino. It will also erase any partnership information with your PC. (You may want to back up your Nino before you take this step.) To perform a hard reset, hold down the **On/Off** button, and then use the end of a paper clip to press the recessed **Soft Reset** button on the back of the unit. For more information about the location of the Soft Reset button, see “A Tour of the Nino” in Chapter 1.

CAUTION If you perform a hard reset, all data and settings will be permanently erased. This action cannot be undone.

- Check for hardware conflicts on your primary PC. Your Windows-based PC uses channels called IRQs. If multiple hardware devices attempt to use the same IRQ, conflicts can occur. Consult your system manufacturer or system administrator to resolve possible conflicts. If you find that you do have a hardware conflict, use the following suggestions to resolve it.

CAUTION Do not try to resolve hardware conflicts without the help of your system administrator or system manufacturer.

- If a modem is using an IRQ port that the Nino could use (3 or 4), move it to a different IRQ port.
- If you use a serial mouse on a Pentium-based system, install a PS/2 port and mouse.
- Uninstall and then reinstall Windows CE Services. If you are using Windows NT Workstation, you must also uninstall RAS.

To uninstall and reinstall Windows CE Services:

- 1 Click **Start**, **Settings**, and then **Control Panel**.
- 2 Double-click the **Add/Remove Programs** icon.
- 3 On the list of installed software, click **Windows CE Services 2.2 (remove only)**, and then click the **Add/Remove** button. When you are asked to remove shared files, click **Yes to All**.

WINDOWS NT ONLY If you are using a primary PC that runs Windows NT Workstation, when you are asked if you want to reboot your primary PC, click **No**. To remove RAS, click **Start**, **Settings**, and then **Control Panel**. Double-click the **Network** icon. On the **Services** tab, click **Remote Access Service**, and then **Remove**.

- 4** Reboot your primary PC.
- 5** Reinstall Windows CE Services.

Other issues

If you can't find an answer to your problem here, from online Help, at the Nino Web site (<http://nino.philips.com>), or at the Microsoft Windows CE Web site (<http://www.microsoft.com/windowsce/default.asp>), see Appendix A, "Technical Support, Service, and Repair."

Technical Support, Service, and Repair

The Nino is designed for worry-free use. However, if you get unexpected results from your Nino, there are several different ways you can get support. This chapter includes information about:

- Support options
- Returning your Nino for repair or exchange

Support options

- Online Help
On the Start menu, tap **Help** to get information about specific features of Nino software.
- The Nino Web site at <http://nino.philips.com/support>
Visit this site, and use Web Assistant self-help software to solve common problems. While you're there, look for the latest Nino news, tips, accessories, support information, and Nino FAQs.
- The Microsoft Windows CE Web site at <http://www.microsoft.com/windowsce/default.asp>
Visit this site for the most recent information about Microsoft Windows CE.
- Chapter 8, "Troubleshooting," of this guide
Chapter 8 provides general troubleshooting suggestions and hints for successfully connecting your Nino to your primary PC.
- If you have questions about the extra software that came with your Nino (such as the Nino Bonus Software), please contact the software developer directly (not Philips Customer Support) for customer support.

- If you can't find an answer to your problem using any of the resources listed above, please send an e-mail to Philips Customer Support describing your problem. The following table lists the e-mail address for your location:

Your location	Support e-mail address
North and South America	support@mobile.philips.com
Europe / Africa	eurosupport@mobile.philips.com
Asia Pacific / Middle East	philipsap@pacific.net.sg

In the unlikely event that you need to contact Philips Customer Support by phone, please refer to the Worldwide Support Card that comes with your Nino for the phone number nearest your location. Please have your version information on hand. (To determine which version of Nino software you have, tap **Start, Programs**, and then **VersionInfo**. Version information appears.)

Returning your Nino for repair or exchange

If a customer support representative tells you that your Nino needs to be sent to Philips for service, please use the following guidelines:

- Make sure that you get a Return Material Authorization (RMA) number and shipping instructions from the customer support representative.
- If you're located in a country where Philips Mobile Computing Group (PMCG) does not officially ship the Nino, the customer service representative will ask you to ship the unit to the nearest country that provides service for your region. The customer support representative will supply you with this information.
- Philips will either perform repairs on your malfunctioning unit or, at its option, Philips may provide you with a refurbished unit in exchange.
- Philips will return the Nino to an address, which you provide, in the country where the unit was serviced.

NOTE Please be aware that, due to customs and export considerations, **PMCG does not ship the Nino outside the country where it is serviced. All duties, taxes, and other charges to export the unit to another country are the owner's responsibility. The Philips service center will not accept a package that has any unpaid charges.**

Additional Windows NT Instructions

Due to the special security and usability features that the Windows NT Workstation operating system provides, your Nino performs differently when you use it with a primary PC that runs Windows NT Workstation. This appendix includes the following information:

- Installing Microsoft Windows CE Services on a Windows NT primary PC and synchronizing for the first time
- About infrared communication

Installing Microsoft Windows CE Services on a Windows NT primary PC and synchronizing for the first time

NOTE You must consult your system administrator to install Microsoft Windows CE Services on a primary PC that runs Windows NT Workstation. You need “administrator” privileges. The following procedure assumes that you are the system administrator, and have a good working knowledge of the Windows NT Workstation operating system.

To prepare your PC for a “partnership” with your Nino, you need to install Microsoft Windows CE Services from the *Microsoft Windows CE Services CD*.

Before you start, save the work on your PC and quit all programs. If this is the first time you are installing Microsoft Windows CE Services on your PC, you may also need to use your Windows CD during the process.

You may also need to change the communication speed (baud rate) of your Nino to match the communication speed of your primary PC. To change the communication speed of your Nino, tap **Start**, **Settings**, **Communications**, and then the **PC Connection** tab. Make sure the **Enable direct connections to the desktop computer** checkbox is checked. By default, the communication speed is 19200 Kbps, and the tab says “Serial @19200.” To change the communication speed, tap **Change Connection**. On the Change Connection screen that appears, select the communication speed from the **Connect to desktop computer using** list that matches the communication speed of your primary PC. For more information, see “How do I check and, if necessary, change the communication speeds (baud rates) on my Nino and primary PC so that they are the same?” in Chapter 8, “Troubleshooting.”

To install Microsoft Windows CE Services and synchronize:

- 1** Log on as a member of the administrator's group.
- 2** Insert the *Microsoft Windows CE Services CD* in your CD-ROM drive.
- 3** Install Microsoft Service Pack 3 for NT.

Microsoft Service Pack 3 is on the *Microsoft Windows CE Services CD*. Open **Optional Components, Microsoft Windows NT Service Pack 3**, and then **I386**. Then, double click **update.exe** to launch the Service Pack Installation Wizard.
- 4** Reboot the primary PC, and then log on as a member of the administrator's group.
- 5** Install Microsoft Windows CE Services.

Microsoft Windows CE Services is on the *Microsoft Windows CE Services CD*. The Microsoft Windows CE Services Setup screen may appear automatically. If the Microsoft Windows CE Services Welcome screen appears, click the Install Microsoft Windows CE Services icon. If neither screen appears, select **Run** from the **Start** menu, type *d:\setup*, where *d* is the name of the drive with the *Microsoft Windows CE Services CD*, and press **Enter**. Follow the directions onscreen. The Installation Wizard presents welcome and licensing information, and then asks you to fill in your name and company, and choose a setup.
- 6** Click the **Typical** option and follow the on-screen instructions.
- 7** When the Microsoft Windows CE Services installation is complete, do not click **Yes** to reboot the PC. Instead, click **No**, and then reinstall Service Pack 3. If the PC asks if you want to overwrite existing files, click **No to All**.
- 8** Reboot the desktop PC, and then log on as a member of the administrator's group.

The **Get Connected** dialog box appears. This may take a few minutes.

- 9** Make sure the Nino is turned on and firmly placed in the Nino Dock. Then, in the **Get Connected** dialog box, click **Start**.
It takes a few moments for the software to locate your Nino and to configure communication settings.
- 10** On the Logon window that automatically appears on the Nino, type your network user name and password.
- 11** Wait a few moments until the New Partnership Wizard appears. The Mobile Devices window will also appear on your PC screen. If Microsoft Windows CE Services fails to detect your Nino, see online Help on your primary PC by choosing **Windows CE Services Help Topics** on the **Help** menu in the Mobile Devices folder, or refer to Chapter 8, “Troubleshooting.”
- 12** Use the New Partnership Wizard to establish the Nino-to-PC partnership.
Fill in the device name and description (“Nino”). Leave the **On Connect** option checked for synchronization. This will synchronize your Nino each time it is connected.
- 13** A few moments after the partnership is established, ActiveSync on your PC automatically starts the initial synchronization process.
Information from primary PC applications such as Microsoft Outlook is transferred to your Nino.
During this process you may see a screen asking you to “Combine” or “Discard” information on the PC and the Nino. Choose **Combine**.
When initial synchronization is successfully completed, your primary PC desktop displays the Mobile Devices window with the message “Connected, Up-to-date” in the lower right corner.
During installation, Microsoft Windows CE Services places a Mobile Devices shortcut on your desktop. (Mobile Devices also shows up as an entry in My Computer.)

About infrared communication

Please be aware that Windows NT 4.0 does not support infrared communication, so you cannot connect to your Nino through the infrared port on your Windows NT notebook computer.

Nino 500 Specifications

Processor	■ 32-bit MIPS-based RISC processor
System memory	■ RAM – 16 MB DRAM ■ ROM – 16 MB ROM
Dimensions/weight	■ Size – approx. 134 x 87 x 20 mm (5.25" x 3.41" x .75") ■ Weight – less than 220 g (8 oz.) with batteries
Communications	■ Optional low-power 19.2-Kbps data/fax modem included with some models
Expansion	■ 1 CompactFlash card slot (Type I and II compatible)
Display	■ Transmissive Color LCD (320 x 240 pixels, 0.24 mm dot pitch), 256 colors ■ White CCFL Backlighting ■ Touch-screen ■ Indicator lights for Charging and Alarm/Message status
Power	■ Rechargeable NiMH battery pack, or 2 AA batteries ■ Built-in fast charger for battery pack ■ DC Power Jack ■ Backup battery (rechargeable, nonremoveable)
Audio	■ Audio In (uni-directional microphone) ■ Windows 95/98-compatible sound compression—up to 16 minutes recording time per each MB of free memory ■ Audio Out for .wav file playback and DTMF generation (auto dialing) ■ Headphone jack
System I/O ports	■ RS-232 serial up to 115 Kbps ■ IrDA infrared transceiver, supports up to 115 Kbps
User Input	■ 4 programmable Quick Start buttons ■ Rocker switch for scroll up and scroll down ■ Action and Exit buttons ■ Stylus ■ Voice
Software	■ Microsoft Windows CE for the Palm-size PC ■ Nino Bonus Software

Regulatory Information

Declaration of conformity

This device complies with Part 15 of the FCC rules. Operation is subject to the following two conditions: (1) This device may not cause harmful interference; and (2) this device must accept any interference received, including interference that may cause undesired operation.

Responsible Party Name Philips Mobile Computing Group

Telephone (602) 557-7624

Product/Model Nino

FCC warning statement

This equipment has been tested and found to comply with the limits for a Class B digital device, pursuant to Part 15 of the FCC Rules. These limits are designed to provide reasonable protection against harmful interference in a residential installation. This equipment generates, uses, and can radiate radio frequency energy. If not installed and used in accordance with the instructions, it can cause harmful interference to radio communications. However, there is no guarantee that interference will not occur in a particular installation. Determine if the equipment does cause interference to radio or television reception by turning the equipment off and on. The user is encouraged to try to correct the interference by one or more of the following measures:

1. Where it can be done safely, reorient or relocate the receiving antenna.
2. Increase the separation between the equipment and receiver.
3. Connect the equipment into an outlet on a circuit different from that to which the receiver is connected.
4. Consult the dealer or an experienced radio/TV technician for help.

Changes or modifications not expressly approved by the manufacturer could void the user's authority to operate the equipment. Shielded interface cables must be used when operating this device or the user's authority to operate this equipment could be voided.

Industry Canada Statement

This Class B device meets all requirements of the Canadian Interference-causing equipment regulations.

Cet appareil numérique de la Class B respecte toutes les exigences du règlement sur le matériel brouilleur du Canada.

VCCI Class 2 Statement

情報処理装置等電波障害自主規制について

この装置は、情報処理装置等電波障害自主規制協議会（VCCI）の基準に基づく第二種情報技術装置です。

この装置は、家庭環境で使用することを目的としていますが、この装置がラジオやテレビジョン受信機に近接して使用されると、受信障害を引き起こすことがあります。

取扱説明書に従って正しい取り扱いをしてください。

Battery Warnings

WARNING Do not mutilate, puncture, or dispose of batteries in fire. The batteries can burst or explode, releasing hazardous chemicals. Discard used batteries according to the manufacturer's instructions and in accordance with your local regulations.

Replace all batteries with only the same or equivalent type recommended in the user's guide that came with your Philips Handheld computer. If your Handheld computer has a replaceable lithium battery, it can explode if it is inserted incorrectly.

VARNING Explosionsfara vid felaktigt batteribyte. Använd samma batterityp eller en ekvivalent typ som rekommenderas av apparattillverkaren. Kassera använt batteri enligt fabrikantens instruktion.

ADVARSEL! Lithiumbatteri—Explosionsfare ved fejlagtig håndtering. Udskiftning må kun ske med batteri af samme fabrikat og type. Levér det brugte batteri tilbage tilleverandøren.

VARIOTUS Paristo voi räjähtää, jos se on virheellisesti asennettu. Vaihda paristo ainoastaan valmistajan suosittelemaan tyyppiin. Hävitä käytetty paristo valmistajan ohjeiden mukaisesti.

ADVARSEL Eksplosjonsfare ved feilaktig skifte av batteri. Benytt samme batteritype eller en tilsvarende type anbefalt av apparatfabrikanten. Brukte batterier kasseres i henhold til fabrikantens instruksjoner.

WAARSCHUWING! Bij dit produkt zijn batterijen geleverd.



Wanneer deze leeg zijn, moet u ze niet weggooien maar inleveren als KCA.

אזהרה
ישנה סכנה של התפוצצות אם מחליפים את הבטריה בצורה לא נכונה.
יש להחליף את הבטריה עם בטריה זהה או דומה, על פי המלצות היצרן.
יש לזרוק בטריות משומשות בהתאם להוראות היצרן.

Microsoft Windows CE CD Software

The *Microsoft Windows CE CD* that came with your Nino includes the following extra software. For more information, see the *Microsoft Windows CE CD*.

- Windows CE 2.0 Ethernet Components
- Microsoft Expedia Pocket Streets 98
- Microsoft Internet Explorer
- Windows 95 Infrared Support Software
- Microsoft Windows 95 Dial-up Networking Upgrade Version 1.2
- Microsoft Windows NT Service Pack 3
- Microsoft Exchange Update
- Microsoft Schedule + Version 7.0a

A

- AC adapter 5
 - diagram 6
 - port 2
 - using 5
- AC adapter port 2
- Action button 2
- Active Desktop 10
 - modifying 11
- ActiveSync 13
 - options 50
- alarms 11
 - setting 11
- America Online (AOL) 60

B

- backlighting 11, 57
- backup battery
 - See batteries, backup battery
- batteries 5
 - backup battery 11
 - checking status 11, 23
 - maintaining 23
 - recharging 23
 - conserving 57
 - installing 5
 - rechargeable battery pack 3, 5, 7, 57
 - warnings 79
- buttons 21
 - Action 21
 - Exit 2
 - hardware 21
 - diagram 21
 - using 21
 - On/Off 2
 - Quick Start 21
 - configuring 22
 - diagram 21
 - Scroll down control 21
 - Scroll up control 21

C

- calibrating 8, 22
- character recognition
 - See Jot Character Recognizer
- CIC Jot
 - See Jot Character Recognizer
- cleaning 58
- command bar 25
 - diagram 25
 - using 25
- communication 61
 - settings 61
- CompactFlash card
 - installing 55
- conflicts 66
 - hardware 66
- connection 14
 - Nino-to-PC 14, 65
 - dial-up
 - See modem, using a
- Contacts 47
 - using 47
- contrast
 - See screen, contrast
- customizing
 - Jot Character Recognizer 28
 - Start menu 11

D

- data 13
 - backing up 13
 - erasing 58
 - protecting
 - restoring 13
 - sorting 28
 - viewing 28
- date 9
 - setting 9
 - setting format 11
- diagram 2
 - AC adapter 6

- battery compartment **5**
- command bar **25**
- front side **2**
- Nino Dock **3**
- Quick Start buttons **21**
- right side **2**
- Start menu **24**
- taskbar **25**
- dial-up adapter **64**
 - upgrade **64**
- dial-up connection
 - See modem, using a
- dock
 - See Nino Dock

E

- electrostatic discharge **58**
 - avoiding **58**
- e-mail messages **50**
 - receiving **51**
 - sending **53**
 - synchronizing **50**
- erasing **58**
 - data **58**
 - settings **58**
- erasing data
 - See data, erasing
- Exit button **2**
- expansion
 - See CompactFlash card

F

- files **13**
 - copying **13**
 - listing **28**
 - sorting **28**
 - viewing **28**
- finding information **31**

G

- getting started **5**

H

- hardware buttons
 - See buttons, hardware
- hardware conflicts **66**
- help **1, 69**
 - online **1**
 - troubleshooting **59**
- home location **8**
 - setting **8**

I

- Inbox **49**
 - using **49**
- infrared communication **34**
 - using **34**
- input methods
 - typing with the keyboard **26**
 - writing using Jot Character Recognizer **27**

J

- Jot Character Recognizer **27**
 - customizing **28**
 - diagram **27**
 - online demonstration **27**
 - references **27**

K

- keyboard **25**
 - adjusting settings **26**
 - diagram **26**
 - shortcuts **26**
 - typing with stylus **26**

L

- lights, indicator
 - See indicator lights

M

- maintenance **57**
 - batteries **57**
 - cleaning **58**
 - screen **57**
- memory **37**
 - adjusting **37**
 - increasing storage **60**
- microphone **2**
- Microsoft Pocket Outlook **44**
 - using **44**
- Microsoft Windows CE **33**
 - using programs **33**
 - Web site **1**
- Microsoft Windows CE Services **20**
 - help **20**
 - reinstalling **66**
 - uninstalling **66**
- Mobile Voice
 - See Voice Recorder
- modem **29**
 - America Online (AOL) **60**
 - Prodigy Classic **60**
 - turning off Internet auto-dialer **63**
 - using a **29, 60**
- modem cable
 - See modem

N

- Nino Dock **3, 58**
 - diagram **3**
- Nino Modem Click-on
 - See modem
- Nino Web site **1**
- Note Taker **39**
 - using **39**
- numbers **11**
 - setting format **11**

O

- On/Off button **2**

- one-hand operation **21**
- online help **1**
- on-screen keyboard
 - See keyboard
- overview **1**
 - diagram **2**
- owner information **10**
 - setting **10**

P

- PCM
 - See Voice Recorder
- Philips Nino CD **1**
- Prodigy Classic **60**
- programs **34**
 - diagram **34**
 - overview **34**
 - switching between **34**
 - using **33, 34**
 - version information **61**
- protecting data **23**

Q

- Quick Start buttons
 - See buttons, Quick Start

R

- RAM **34**
- rechargeable battery pack
 - See batteries, rechargeable battery pack
- recording
 - See Voice Recorder
- regulatory information **77**
- reset **59**
 - hard **58, 66**
 - soft **58, 59**
- resources **1**
 - getting support **69**
 - guidelines for returning Nino **70**
 - support e-mail addresses **70**
 - Worldwide Support Card **70**
- ROM **34**

S

- screen **57**
 - contrast **7**
 - adjusting **7**
 - maintenance **57**
- Scroll down control **2**
- Scroll up control **2**
- settings **11**
 - Active Desktop **11**
 - alarms **11**
 - backup battery **11**
 - communication **61**
 - date **9**
 - date format **11**
 - erasing **58**
 - home location **8**
 - keyboard **26**
 - number format **11**
 - owner information **10**
 - screen contrast **7**
 - Start menu **11**
 - time **9**
 - time format **11**
 - viewing **30**
- shortcuts **26**
 - keyboard **26**
- shut-off time **57**
- software
 - See programs
- sounds **23**
 - improving quality of **60**
 - turning off **57**
- specifications **75**
- Start menu **11**
 - customizing **11**
 - diagram **24**
 - using **24**
- stylus **22**
 - calibrating **22**
- support
 - See resources
- synchronizing **13**

e-mail messages **50**

T

- tabbing **22**
- taskbar **25**
 - diagram **25**
 - using **25**
- Tasks **48**
 - using **48**
- time **9**
 - setting **9**
 - setting format **11**
- tour **2**
- troubleshooting **59, 69**
- turning on/off **7**

V

- version information **61**
- viewing information **28**
- Voice Recorder **35**
 - changing recording format **60**
 - memory **37**
 - Mobile Voice **60**
 - PCM **60**
 - using **35**
- volume **23**

W

- Web sites **1**
 - Microsoft Windows CE **1**
 - Nino **1**
- Windows 95 **63**
 - communication settings **61**
 - dial-up adapter **63**
- Windows 98 **61**
 - communication settings **61**
- Windows NT **13**
 - communication settings **62**
 - installing Windows CE Services **71**
 - Nino-to-PC connection **71**
 - special instructions **71**
 - using infrared port **65, 73**