



**CASSIOPEIA**

**CASIO**  
**SOFT**

CSI  
Image  
Viewer

---

User's  
Guide

## **Copyright Notice**

No part of this publication may be reproduced, transmitted, transcribed, stored in a retrieval system, or translated into any human or computer language, in any form or by any means, without the express written permission of CASIO Soft, Inc.

Copyright 1997-99 by CASIO Soft, Inc., All Rights Reserved. CASIO Soft and its logo are trademarks of CASIO Soft, Inc.

Microsoft, Windows, Windows NT and are registered trademarks of Microsoft Corporation in the U.S. and other countries. All other product and company names mentioned herein may be the trademarks of their respective owners.

The contents of this document are subject to change without notice.

In no event shall CASIO Soft, Inc., be liable to anyone for special, collateral, incidental, or consequential damages in connection with or arising out of the purchase or use of these materials. Moreover, CASIO Soft, Inc., shall not be liable for any claim of any kind whatsoever against the use of these materials by any other party.

The User's Guide and the software it describes are owned by CASIO Soft, Inc.

The operations described in this manual assume that you are familiar with the operation and nuances of the Windows CE Operating System. See the documentation that comes with Windows CE for full details on its operation.

Be sure to read this User's Guide before using these applications, and keep it handy for future reference.

## CSI Image Viewer Features

- Supports the most popular and widely used graphic image formats, including .bmp, .jpg, .upf and .2bp file formats
- Compatible with Color Palm-size PC devices
- Automatic **"Save As Wallpaper"** feature
- Supports images stored on CompactFlash
- Works with CASIO's QV Digital Camera and its exclusive .cam image file format
- Supports devices with IrTranP capabilities

## Launching Image Viewer

Tap on the **START** button, then on the **Program** menu display. Next, locate and tap on the **"CSI Image Viewer"** selection. The application will launch and appear on your Palm-size PC touch screen.

## Quick Start Guide

- **How to import, open and view an image file from your Desktop PC to Palm-size PC device:**

**Important:** Make sure Windows CE Services has been successfully installed to your Desktop PC and communication between your PC and Palm-size PC device has been established.

Double-click to open the Mobile Device folder that was created after installing Windows CE Services CD-ROM. By default, this folder is located on your PC's Desktop area.

Navigate through the contents of your device, via the Mobile Device folder. Stop searching when you see the **"My Documents"** folder.

Next, locate the image file on your Desktop PC that you would like to import to your mobile device.

Using your mouse, drag and drop (or copy and paste) the image file icon directly onto the Mobile Device's **"My Documents"** folder.

A Windows CE dialog box will appear named **"Copy and Convert to mobile device format"**. Tap the **[OK]** button to begin the file transfer.

When the file transfer is complete, tap on the device's **START** icon, then tap on the **"CSI Image Viewer"** selection seen on **START >Programs** menu display. The application will launch and appear on your touch screen.

The **"Open Image File"** dialog will appear showing the image file you just imported.

Tap and highlight the newly imported image file, then tap the **[OK]** button to open and view your image file.

- **How to Save an image file as a different graphic format:**

Let's use your currently opened image file (from the steps performed above) and save it as a different graphic format.

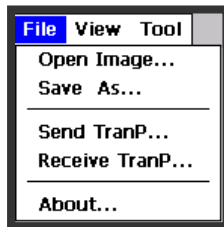
Go to the pull-down **[File]** menu and select/tap on the **"Save As..."**

The **"Save File"** dialog will appear. Go to the **[Filename:]** field and use your Input Panel to type in your new file name.

Next, go to the **[Type:]** field and tap on the down arrow button to select a different graphic format. Tap the **[OK]** button after selecting the format type.

## Image Viewer Menus

The **[File]** menu contents and their operations are as follows:



**[Open Image...]**: Tap on this selection to launch the “Open Image File” dialog window.

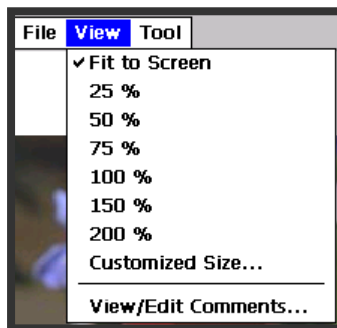
**[Save As...]**: Tap on this selection to save your displayed image to a new file name and/or a different graphic format.

**[Send TranP...]**: Sends out IrTranP signal to IrTranP equipped device. (Explained later in this User's Guide)

**[Receive TranP...]**: Receives IrTranP signal from IrTranP equipped device. (Explained later in this User's Guide)

**[About]**: This selection is a standard Windows CE “About” box that contains legal information and the application's version number.

The **[View]** menu contents and their operations are as follows:



**[Fit to Screen]**: This default view setting will properly resize your image to the size of your touch screen display. This calculated “Fit to Screen” sizing eliminates the need for scroll bars.

**[25% - 200%]**: Select/tap a desired viewing size of your displayed image.

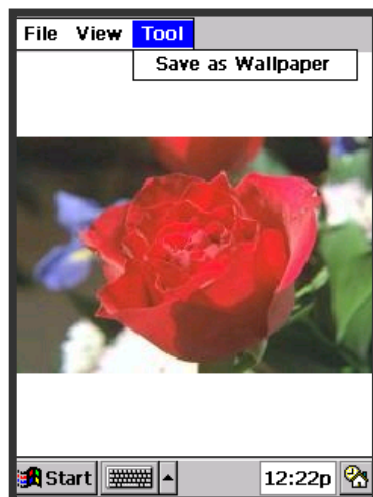


**[Customized Size...]**: Select this option to change the width and height of your displayed image manually by pixel size. In addition, your image's **Aspect Ratio** can be retained or canceled while in this **[View]** option.

**[View/Edit Comments]**: This selection will only become active after opening a .cam file (the native format of the CASIO QV Camera family).

After tapping on the “View/Edit Comments” selection, a “Edit” dialog will appear containing four separate text entering fields:

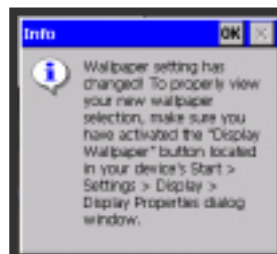
- ✓ Title:
- ✓ Photo By:
- ✓ Date:
- ✓ Comments: (64 character maximum)



The **[Tool]** menu contents and their operations are as follows:

CSI Image Viewer features a “Save as Wallpaper” option. This allows you to add a personal touch to your device's “background” display.

To use this feature, locate a favorite image within your device, then simply tap on the “Save as Wallpaper” option found in the “Tool” drop down menu. **IMPORTANT:** The image must be a .bmp or .2bp for this option to be “active”.



Immediately after tapping on the “Save as Wallpaper” option, this dialog window will appear telling you that your device's “Wallpaper” setting has changed. It will also contain other useful information.

## Opening Images with Image Viewer

After launching Image Viewer an “Open Image File” dialog window will first appear on your touch screen:

The “Open Image File” dialog box contains the following:

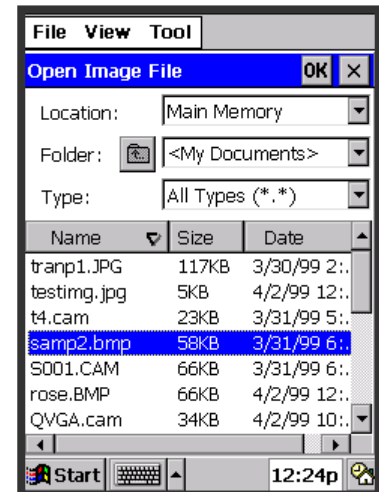
**[Location:]** The default storage location is your device's Main Memory.

**Note:** Image Viewer will auto-detect a pre-installed CompactFlash storage card. If images have been previously saved to your CompactFlash card, simply tap the **[Location:]** down arrow to switch your image storage location to from “Main Memory” to “Storage Card”.

**[Folder:]** The default Folder setting is set to “<My Documents>”. Tap on the folder icon button to navigate your way upwards through other available save folders.

Tap on the folder icon button to navigate your way upwards through other available save directories.

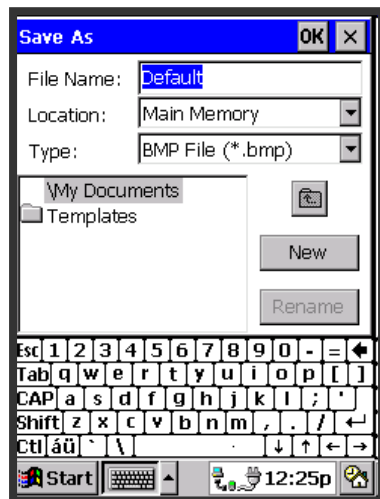
**[Type:]** The default setting for opening image files is set to “All Types” of files. Tap on the **[Type:]** down arrow to open a specific image format type, then tap the **[OK]** button



## Saving Images with Image Viewer

Ready to save your Image?

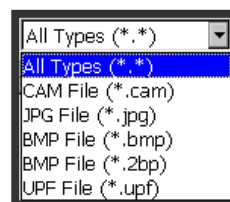
Tap on the “File” pull down menu and select/tap on the “Save As” selection. This “Save As” dialog window will appear on your touch screen. Type or tap in the name of your file in the **[File name:]** field.



Tap on the **[Location:]** down arrow to choose your desired saving location:

Main Memory  
Storage Card

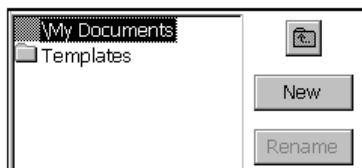
Tap on the **[Type:]** down arrow to select an image format type you would like your image saved as, then tap the **[OK]** button.



Available “Save As...” Image Format Types:

- .cam – native format of the CASIO QV Camera family.
- .jpg – widely known and used image format.
- .bmp – native graphic format of Windows 95, 98 and NT
- .2bp – native graphic format of Windows CE
- .upf - native format of devices featuring IrTranP support

**IMPORTANT:** When saving an image from a .jpg file format to a .cam file format, the size of the .jpg image **MUST BE** a standard 1280 x 960, 640 x 480 or 320 x 240 size format. Any “non-standard” .jpg size format will not save correctly as a .cam file format.



Tap the folder icon to advance upwards to your “My Documents” storage folder.

Tap on the “New” button to create a new save folder under the default “My Documents” folder path.

Tap once to highlight a “New Folder” or an existing one, then tap on the “Rename” button and enter a new folder name using your device's Input Panel. **Tip:** A “slow” double tap will initiate the folder rename function. In addition, each “quick” double tap on a folder name will allow you to navigate to the next folder below the one you are currently in.

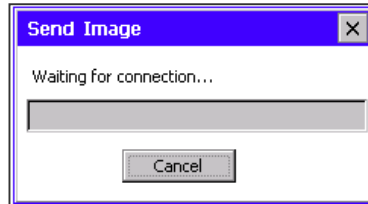
## Ir TranP: Sending and Receiving Image Files

### Sending Image Files:

Open and view the ".jpg" or ".upf" file you would like to "Ir" transfer to a **TranP** device.



Go to the [File] drop down menu and tap on the "Send TranP" selection.



A "Send Image" dialog will appear and show a status bar as the transfer is in progress. Align the two devices appropriately until the transfer begins. Hold each device steady to ensure a trouble-free Ir transfer.

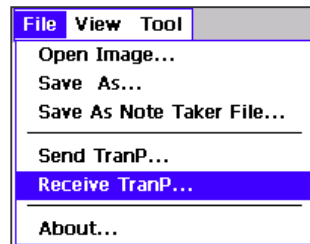
While the image file is in transit, its file name (originating from your Windows CE device) will appear within this "Send Image" dialog window.

Tapping the "X" or "Cancel" button will terminate the Ir transfer in progress.

After the image file has been successfully transferred, it can be viewed on the **TranP** equipped device.

**IMPORTANT:** The image file you transfer via, "Send TranP" must have the file extension ".upf" or ".jpg" associated with it. If the image file you desire to transfer is not one of these file types, you must perform a "Save As..." and save the image file type as a ".upf" or ".jpg" before sending it. Also, in order for a successful Ir transfer between devices, images **MUST BE** either 640 x 480 or 1280 x 960 in size. Image sizes other than these may fail.

### Receiving Image Files:



Go to the [File] drop down menu and tap on the "Receive TranP" selection.

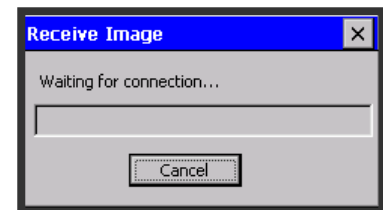
Select the image you would like to send from the **TranP** equipped unit to your Windows CE device, then set your **TranP** device to "Ir Sending" mode. (See the User's Manual that came with your TranP equipped unit for details on sending images, via "Ir".

Align the two devices appropriately until the transfer begins.

**Tip:** Hold each device steady to ensure a trouble-free Ir transfer.

This "Receive Image" dialog will show a status bar as the transfer is in progress. Also while the image file is in transit, its file name (originating from the sending **TranP** device) will appear within this "Receive Image" dialog window.

Tapping the "X" or "Cancel" button will terminate the Ir transfer in progress.



After the image file has been successfully transferred, it will appear on your Windows CE device. Use Image Viewer's "Save As..." option to rename and/or store the file to a location within your Windows CE device.

## A note about un-installing CSI Image Viewer

If you have assigned a Hardware button to launch CSI Image Viewer, please read on:

Before un-installing CSI Image Viewer please go back into the device's **"Settings"** > **"Button Properties"** section and tap on the **"Program"** tab.

While in the **"Program"** section, tap on the button labeled **"Restore Defaults"**. This operation will erase CSI Image Viewer's previous device button assignment and return your Palm-size PC's factory button assignment settings.

To un-install CSI Image Viewer from your device, tap on the **[START]** button, then tap on the **"Settings"** > **"Remove Programs"** setting.

Next, tap once to highlight the **"CSI Image Viewer"** text, then tap the **[Remove]** button. When the **"CSI Image Viewer"** text disappears, tap on the **[OK]** button. The application will now be removed from your device.

**IMPORTANT:** If you do not restore the device's button assignments after un-installing CSI Image Viewer, pressing on a previously assigned device button will produce this error message:

